



State and Territory Single Points of Contact (SPOC) Meeting

Presentation Track | Palo Verde I
November 16-17, 2016 | Phoenix



Presentation Track Overview



Interview: State Executive Perspectives for Informing the Governor

TJ Kennedy, President | Moderator
Jim Douglas | former VT Governor
Col. Mike Edmonson | LA SPOC
Jim Waskom | Dir., LA Dept. of Homeland Security and Emergency Preparedness



PSCR

PSCR Update & Public Safety Innovation Accelerator Program Federal Funding Opportunity

Jeb Benson

PSCR Update – Topics

- Federal Funding Opportunity
 - Goals & General Info
 - Technology Areas
 - Teaming
 - Announcement
 - What SPOCs Can Do
- Prize Competitions
- Time permitting
 - NIST R&D Tech Areas

A large, blue, irregular thought bubble with a black outline. Inside the bubble, the text "ASK QUESTIONS ALONG THE WAY" is written in white, bold, sans-serif capital letters. The bubble has three smaller circles at the bottom, suggesting a trail or movement.

**ASK QUESTIONS
ALONG THE WAY**

Public Safety Innovation Accelerator Program

FFO - Goals

- Accelerate key technology areas
- Expand the R&D base
- Enhance the R&D toolsets
- Create sustainable research ecosystems
- Identify areas ripe for innovation funding
- Near-term and long-term positive impact for first responders (need SPOC help here...)

General

- Anticipate up to \$30M in FY2017-19 with awards in range of \$10k to \$1M per year
 - Two year period of performance
 - Exception: Three year POP for academic proposals led by PhD students
- Grants or cooperative agreements
- Open to all non-Federal entities

Technology Areas

- Six technology areas:
 - Mission Critical Voice
 - Location Based Services
 - Public Safety Analytics
 - Communications Demand Modeling
 - Research and Prototyping Platforms
 - Resilient Systems
- Proposals can address specific technology areas and objectives, or be cross-cutting in nature

Technology Areas

- MCV
 - Direct mode operations
 - MCPTT
- LBS
 - Positioning
 - Dissemination
 - Data integration and interoperation
 - Mapping and visualization
 - Affordable localization reference environments

Technology Areas

- Public Safety Analytics
 - Data sets
 - Analytics tools and frameworks
 - Data analytics
- Public Safety Communication Demand Model
- Research and Prototyping Platforms
 - Tech areas: LTE, wireless backhaul, interworking, positioning and LBS
 - Platforms:
 - Link/Physical-level simulators
 - Packet-level network simulators
 - Software defined radio

Technology Areas

- Resilient Systems
 - Decentralizing LTE/IMS control and data
 - Routing and mobility across heterogeneous networks
 - Data management, access, and consistency
 - Service replication and access
 - Future-proofing
 - Security, identity, and access control

Teaming

- Teaming with Public Safety
 - Required for Analytics (Letters of commitment)
 - Encouraged for other areas
 - Funding provided to organizations if needed
 - PSCR intends to maintain list of interested PSOs
 - For this FFO, public safety = Fire, EMS, and law enforcement
 - U.S. public safety partners only

Announcement

- FFO posted on www.grants.gov and www.nist.gov/ctl/pscr
- Webinars soon after geared for...
 - Potential applicants
 - Public safety
- Send questions to pscrffo@nist.gov
- Will post new information on the website

What SPOCs can do

- Outreach
 - We want highly competitive applications
- Engage your public safety network
 - Unique opportunity to participate in R&D
 - PS can drive the proposal, too
 - Contact PSCR if interested: pscrffo@nist.gov
- Evaluators
- UX interviews
 - Need 100-200 SMEs for 1 hr. interview



Prize Competitions

- Upcoming competitions/challenges
 - Video Challenge Competition launch – Fall 2016
 - First UI/UX-related Prize/Challenge launch for VR – Winter 2016
 - First LBS-related Prize/Challenge launch – Summer 2017



Early Builders Working Group (EBWG) Updates

Todd Early, EBWG Chair
Texas SPOC



Early Builder Projects



FirstNet Guiding Principal

“FirstNet will provide technical support to these projects and will share any lessons learned with the broader public safety community to enable the successful implementation of FirstNet’s nationwide network deployment. Designing and deploying a network that lives up to these principles will require an extraordinary level of coordination and collaboration among all stakeholders.”

Project	Planned Sites	On-Air	Primary Focus Areas / Key Learning Conditions (KLCs)
1. LA-RICS	77	61	Secondary responders partnerships, Quality of Service, priority/pre-emption
2. NM	7	7	Hosted core, int’l border spectrum management, Federal partnerships
3. NJ*	32	31	Deployable assets, Disaster Recovery, training exercises, Network Operations Center notification
4. ADCOM	20	19	PSCR program/FirstNet test support, Band Class 14 device testing, demonstration access
5. TX	93	24	Core migration, data analytics, rural coverage, special events, LTE training

*: New Jersey Totals Exclude Vehicle Network Systems and Staged Units

Transforming public safety’s future – together



LA-RICS

■ Highlights:

- 61 permanent LTE PSBN sites on-air; 13 COWS nearing completion, 2 spares
- 86 devices provisioned to date; approx. 450+ IVRs installed between LASD and LACF
- BTOP grant period can be extended to 2020; \$37M remaining.
- New procurement proposed to NTIA
 - 26 new LTE sites, NOC funding, network operations support, PSEN migration

■ Lessons Learned / Project Challenges:

- Device provisioning delayed by technical issues
- Remote NOC monitoring and lack of network operations tools and support systems impact local level network operations

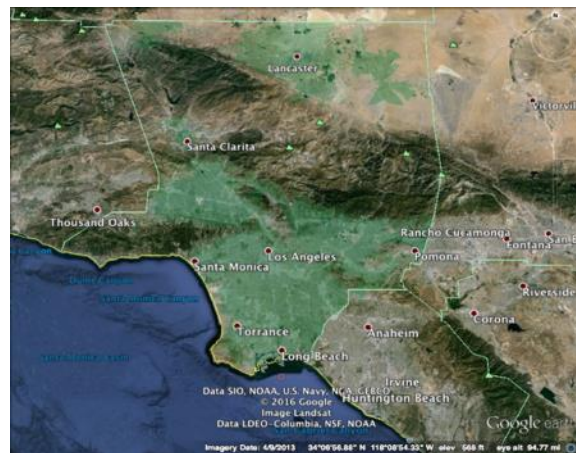


Fig.1 – Existing Mobile Coverage

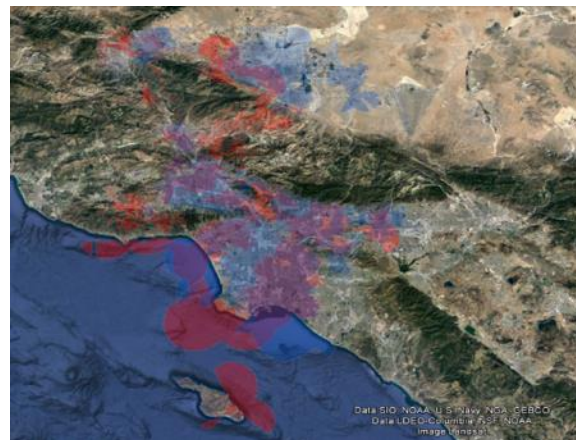
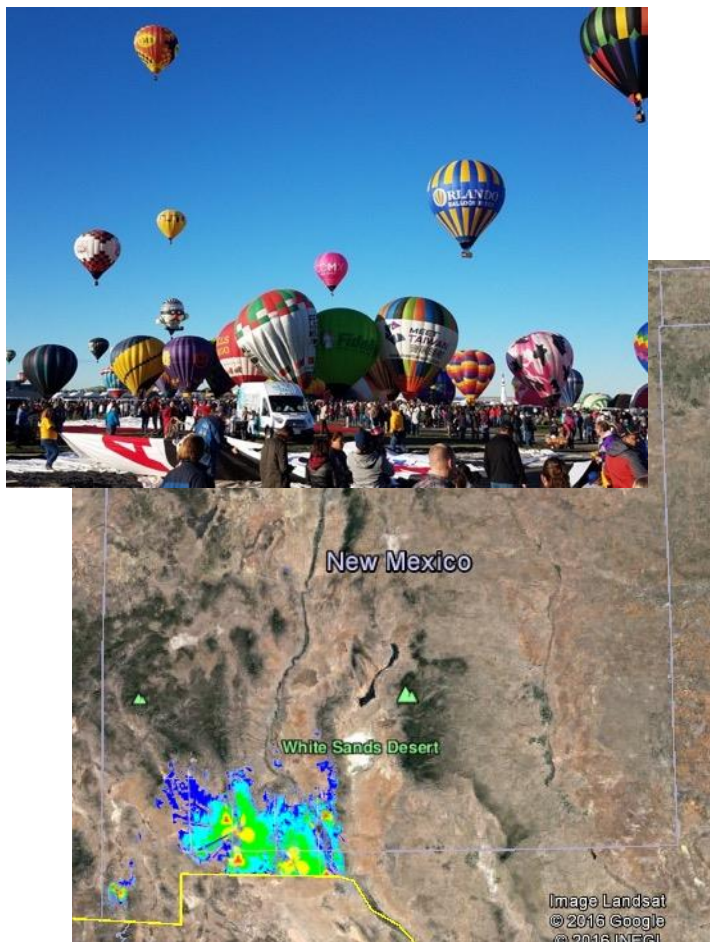


Fig.2 – Proposed Phase 2 Mobile Coverage



New Mexico



■ Highlights

- US/ Mexico Border operations and coverage are in place near Las Cruces
- Active with Special Events support for Law Enforcement and EMS including Balloon Fiesta, New Mexico State Fair
- Project successfully utilized remote core connectivity and operations

■ Lessons Learned / Project Operations

- Budget constraints forcing project to implement local core due to on-going maintenance and transport costs
- Project is struggling with user adoption due to lack of wide area coverage footprint
- The team is planning to move the Artesia/FLETC site to the Santa Fe area to expand coverage for the Santa Fe police department
- Loss of key engineering personnel present transition challenges for network operations



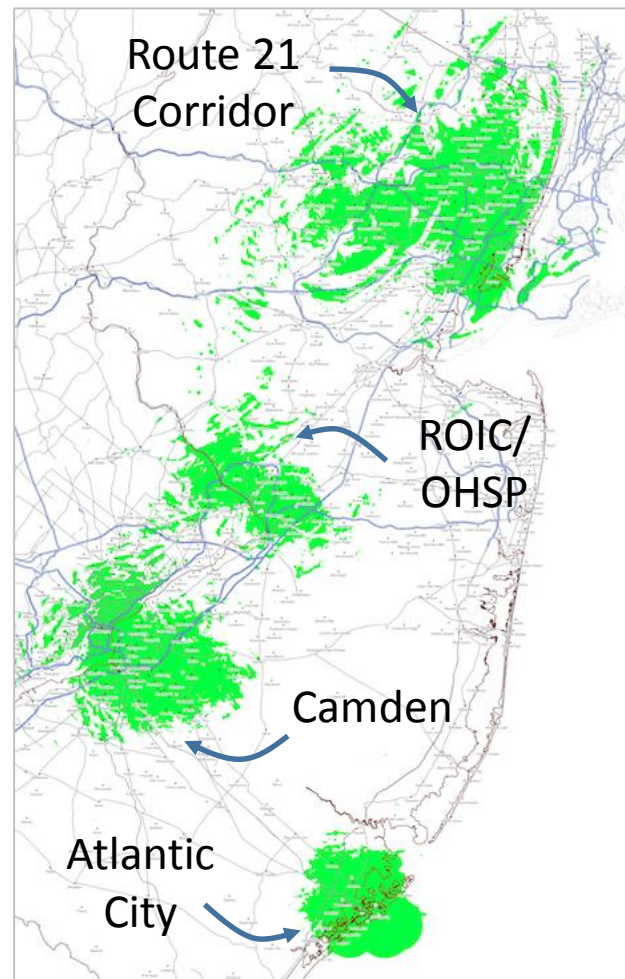
New Jersey

■ Highlights

- Project implementation substantially complete (now in BTOP closeout period)
- Project leadership transition in progress – good progress made
 - Operational focus on user management and hosting agency satisfaction

■ Lessons Learned / Project Challenges

- Network monitoring far more complex than LMR - strong management focus required to understand user experience
- 4.9 GHz microwave a good solution for temporary service – especially in urban areas
- Device installation (access to public safety vehicles) requires strong coordination
- Data analytics (key performance indicators) is essential to effective network management

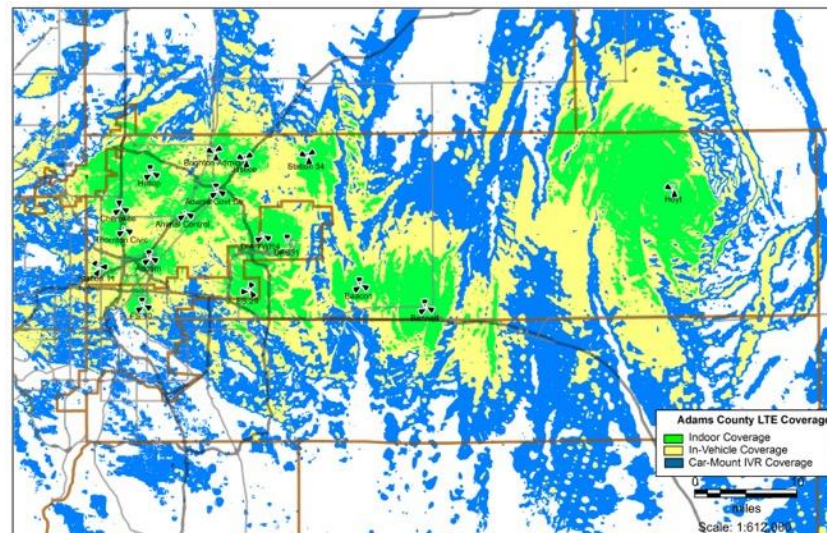




ADCOM

■ Highlights

- Usage on the band 14 ADCOM network has increased slightly with download usage approaching 50M/day
- Northglenn PD is the most active agency on the ADCOM network
- Project distributed 24 SIMs to Adams County Sheriff. Agency goal to transition users to Band 14 by 1Q17

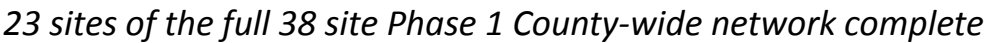


■ Lessons Learned/Project Challenges

- Project has been struggling operationally to maintain network due to cost and limited staffing. (9 sectors currently off-air with no remediation planned)
- Getting consistent access to system usage and Key Performance Indicators following core upgrade continues to be a challenge



- Vehicle modem installations with Brazos County Sheriffs Dept. and City of Webster PD
- Planning larger sales push after completion of network build in early 2017
- Project continues to lead Early Builders in network performance monitoring



- The project is taking a lead role with applications testing including ICAM proof of concept with PSAC, PSCR and Georgia Tech Research Institute.
- As seen at WSMR, training at the practitioner level can improve compromised operations.



Early Builder Use Cases and Planned Events



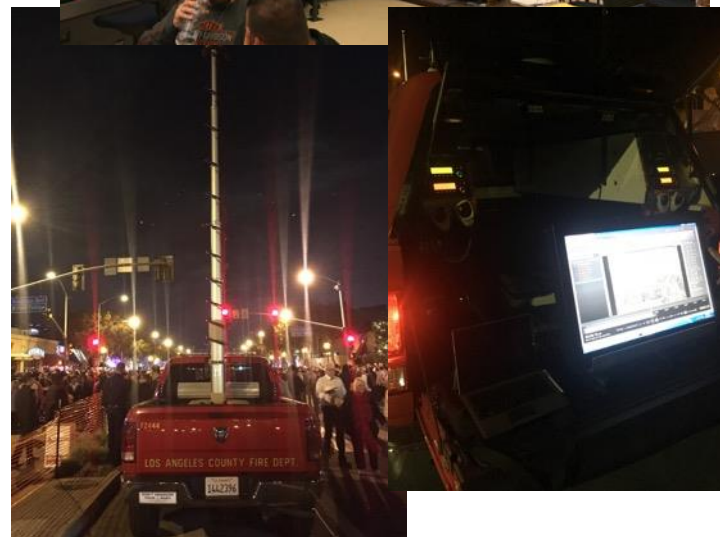
LA-RICS

■ West Hollywood Halloween Carnival

- B14 connectivity provided to support law enforcement and fire services.
- 500,000+ event attendees spread over 2 miles of Santa Monica Blvd.
- 100 LTE devices (handheld and some IVR), 6 fixed cameras, and 3 Strongwatch mobile video unit deployed.
- Network performance impacted during the event, thought to be caused by network software upgrade implemented during event.
 - Waiting on full Vendor report on network KPI analysis

■ 2017 Tournament of Roses Parade

- Event in planning stages; Lessons learned from Halloween to be implemented.
- More users on Network this year and additional responsibility for the Rose Bowl game inside the stadium.
- Investigating backhaul at Rose Bowl for COW deployment.





New Jersey

- Project has supported multiple events including:
 - Papal visit
 - Miss America
 - Atlantic City beach concerts
 - PGA championship
 - FEMA exercises
- Most recently, JerseyNet supported the annual steeplechase in Far Hills
 - Crowds in excess of 35k
 - Commercial congestion observed – even with commercially deployed COWs
 - Demonstrated dedicated service to public safety
- Potential support of presidential inauguration under discussion

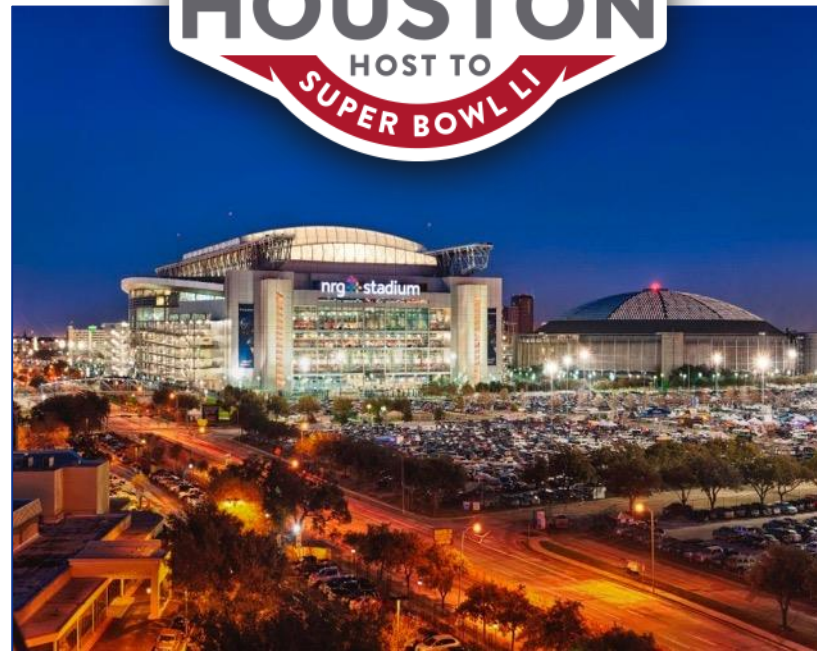


Transforming public safety's future – together

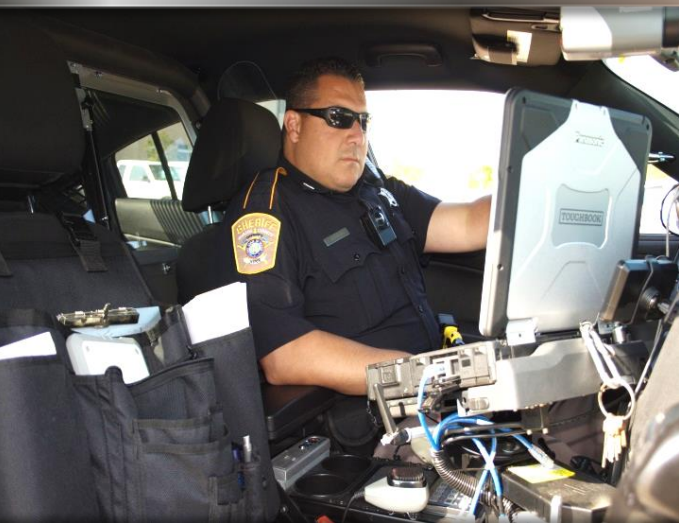


Harris County

- Network supporting upcoming Super Bowl across the the city of Houston
 - Team focused on indoor location services and situational awareness applications
 - Validating service during regular season NFL games
- Houston Rodeo and Livestock Show 2016
 - 30 day event provided B14 connectivity and services to law enforcement and parking services
 - Demonstrated device, accessory, and application complexities
 - Service becomes “mission critical” once in the hands of first responders



Brazos County Sheriff's Office



Brazos County: CAD Data



Traffic Stop
F1

10-8
F2

Out Of
Service
F3

Transport
F4

Transport
Complete
F5

FldCont
F6

Parking
Violation
F7

Patrol

Dispatch

Query

VIEW1

Active Calls

Unit Status

MAP

OnView

Service

Current Incidents

Filter	Call#	Type	Location	Status	Time	Group
	160910075	RECVEH	EARL RUDDER FW S/UNIVERSITY DR E, CS	Pending	00h 06m	PD1
	160910074	CHECK	LAKE BRYAN	Dispatched	00h 06m	PD1
	160910072	CPAT	1 RAVEN DR	Dispatched	00h 10m	SO
	160910071	RECVEH	AUSTIN'S COLONY PW/BOONVILLE RD, BR	Dispatched	00h 07m	PD1
	160910051	INFO	COLLEGE VIEW DR/FOURTH ST, BR	Pending	01h 39m	PD1
	160910048	50PI	WILDFLOWER DR/BRIARCREST DR, BR	Dispatched	01h 46m	PD1
	160910046	TRANSL	BRAZOS COUNTY DETENTION CENTER, BR	Pending	02h 01m	JAIL
	160900334	59	MEMORIAL FUNERAL CHAPEL, BR	Pending	11h 24m	PD1
	160900286	11CUS	2549 PLEASANT HILL RD, BC	Dispatched	00h 12m	SO
	160900266	INFO	LAKE BRYAN, BR	Pending	15h 25m	PD1
		JAIL	LOWRISK	Dispatched	20h 09m	SO
		JAIL	BRAZOS COUNTY DETENTION CENTER, BR	Dispatched	01h 31m	PD1
		JAIL	BRAZOS COUNTY DETENTION CENTER, BR	Dispatched	01h 29m	PD1
		JAIL	BRAZOS COUNTY DETENTION CENTER, BR	Dispatched	01h 28m	PD1
		JAIL	BRAZOS COUNTY DETENTION CENTER, BR	Dispatched	01h 26m	PD1
		JAIL	BRAZOS COUNTY DETENTION CENTER, BR	Dispatched	01h 19m	PD1
		JAIL	VISITATION X4	Dispatched	01h 08m	SO
		JAIL	Bryan Animal Center	Dispatched	00h 58m	PD2
		6	IN AT 0900	Dispatched	00h 39m	SO
		PPWRK	OFFICE	Dispatched	00h 32m	CONS
		JAIL	RB X4	Dispatched	00h 29m	SO
		6	BLIN PD WITHOUT RADIO NO CHECKS	Dispatched	00h 29m	BLIN
		6	BVCOG, BR	Dispatched	00h 24m	PD1
		COURT	BCDC	Dispatched	00h 20m	PD2
		PPWRK	OFFICE	Dispatched	00h 18m	CONS
		JAIL	XPO X3 EACH	Dispatched	00h 14m	SO
		JAIL	XPO X3 EACH	Dispatched	00h 14m	SO

Send

Run F

CAD ACKNOWLEDGED MESSAGE

Available

Stacked: 0

Messages: 0

My Details • 139S

Traffic Stop
F1

10-8
F2

Out Of
Service
F3

Transport
F4

Transport
Complete
F5

FldCont
F6

Parking
Violation
F7

Patrol

Dispatch

Query

Admin

VIEW1

Active Calls

Unit Status

MAP

OnView

AVLQ

Layers

Map

Map Tools

Map Legend

Map Data

Map Info

Map Settings

Map View

Map Zoom

Map Pan

Map Rotate

Map Reset

Map Close

Map Print

Map Save

Map Load

Map Export

Map Import

Map Help

Map About

Map Version

Map Copyright

Map License

Map Terms

Map Privacy

Map Security

Map Support

Map Feedback

Map Contact

Map Address

Map Phone

Map Email

Map Website

Map Social

Map RSS

Map XML

Map JSON

Map CSV

Map PDF

Map DOC

Map XLS

Map ZIP

Map TAR

Map GZ

Map RAR

Map 7Z

Map BZ

Map XZ

Map LZ

Map ZL

Map ZN

Map ZS

Map ZT

Map ZU

Map ZV

Map ZW

Map ZX

Map ZY

Map ZZ

Map ZA

Map ZB

Map ZC

Map ZD

Map ZE

Map ZF

Map ZG

Map ZH

Map ZI

Map ZJ

Map ZK

Map ZL

Map ZM

Map ZN

Map ZO

Map ZP

Map ZQ

Map ZR

Map ZS

Map ZT

Map ZU

Map ZV

Map ZW

Map ZX

Map ZY

Map ZZ

Map ZA

Map ZB

Map ZC

Map ZD

Map ZE

Map ZF

Map ZG

Map ZH

Map ZI

Map ZJ

Map ZK

Map ZL

Map ZM

Map ZN

Map ZO

Map ZP

Map ZQ

Map ZR

Map ZS

Map ZT

Map ZU

Map ZV

Map ZW

Map ZX

Map ZY

Map ZZ

Map ZA

Map ZB

Map ZC

Map ZD

Map ZE

Map ZF

Map ZG

Map ZH

Map ZI

Map ZJ

Map ZK

Map ZL

Map ZM

Map ZN

Map ZO

Map ZP

Map ZQ

Map ZR

Map ZS

Map ZT

Map ZU

Map ZV

Map ZW

Map ZX

Map ZY

Map ZZ

Map ZA

Map ZB

Map ZC

Map ZD

Map ZE

Map ZF

Map ZG

Map ZH

Map ZI

Map ZJ

Map ZK

Map ZL

Map ZM

Map ZN

Map ZO

Map ZP

Map ZQ

Map ZR

Map ZS

Map ZT

Map ZU

Map ZV

Map ZW

Map ZX

Map ZY

Map ZZ

Map ZA

Map ZB

Map ZC

Map ZD

Map ZE

Map ZF

Map ZG

Map ZH

Map ZI

Map ZJ

Map ZK

Map ZL

Map ZM

Map ZN

Map ZO

Map ZP

Map ZQ

Map ZR

Map ZS

Map ZT

Map ZU

Map ZV

Map ZW

Map ZX

Map ZY

Map ZZ

Map ZA

Map ZB

Map ZC

Map ZD

Map ZE

Map ZF

Map ZG

Map ZH

Map ZI

Map ZJ

Map ZK

Map ZL

Map ZM

Map ZN

Map ZO

Map ZP

Map ZQ

Map ZR

Map ZS

Map ZT

Map ZU

Map ZV

Map ZW

Map ZX

Map ZY

Map ZZ

Map ZA

Map ZB

Map ZC

Map ZD

Map ZE

Map ZF

Map ZG

Map ZH

Map ZI

Map ZJ

Map ZK

Map ZL

Map ZM

Map ZN

Map ZO

Map ZP

Map ZQ

Map ZR

Map ZS

Map ZT

Map ZU

Map ZV

Map ZW

Map ZX

Map ZY

Map ZZ

Map ZA

Map ZB

Map ZC

Map ZD

Map ZE

Map ZF

Map ZG

Map ZH

Map ZI

Map ZJ

Map ZK

Map ZL

Map ZM

Map ZN

Map ZO

Map ZP

Map ZQ

Map ZR

Map ZS

Map ZT

Map ZU

Map ZV

Map ZW

Map ZX

Map ZY

Map ZZ

Map ZA

Map ZB

Map ZC

Map ZD

Map ZE

Map ZF

Map ZG

Map ZH

Map ZI

Map ZJ

Map ZK

Map ZL

Map ZM

Map ZN

Map ZO

Map ZP

Map ZQ

Map ZR

Map ZS

Map ZT

Map ZU

Map ZV

Map ZW

Map ZX

Map ZY

Map ZZ

Map ZA

Map ZB

Map ZC

Map ZD

Map ZE

Map ZF

Map ZG

Map ZH

Map ZI

Map ZJ

Map ZK

Map ZL

Map ZM

Map ZN

Map ZO

Map ZP

Map ZQ

Map ZR

Map ZS

Map ZT

Map ZU

Map ZV

Map ZW

Map ZX

Map ZY

Map ZZ

Map ZA

Map ZB

Map ZC

Map ZD

Map ZE

Map ZF

Map ZG

Map ZH

Map ZI

Map ZJ

Map ZK

Map ZL

Map ZM

Map ZN

Map ZO

Map ZP

Map ZQ

Map ZR

Map ZS

Map ZT

Map ZU

Map ZV

Map ZW

Map ZX

Map ZY

Map ZZ

Map ZA

Map ZB

Map ZC

Map ZD

Map ZE

Map ZF

Map ZG

Map ZH

Map ZI

Map ZJ

Map ZK

Map ZL

Map ZM

Map ZN

Map ZO

Map ZP

Map ZQ

Map ZR

Map ZS

Map ZT

Map ZU

Map ZV

Map ZW

Map ZX

Map ZY

Map ZZ

Map ZA

Map ZB

Map ZC

Map ZD

Map ZE

Map ZF

Map ZG

Map ZH

Map ZI

Map ZJ

Map ZK

Map ZL

Map ZM

Map ZN

Map ZO

Map ZP

Map ZQ

Map ZR

Map ZS

Map ZT

Map ZU

Map ZV

Map ZW

Map ZX

Map ZY

Map ZZ

Map ZA

Map ZB

Map ZC

Map ZD

Map ZE

Map ZF

Map ZG

Map ZH

Map ZI

Map ZJ

Map ZK

Map ZL

Map ZM

Map ZN

Map ZO

Map ZP

Map ZQ

Map ZR

Map ZS

Map ZT

Map ZU

Map ZV

Map ZW

Map ZX

Map ZY

Map ZZ

Map ZA

Map ZB

Map ZC

Map ZD

Map ZE

Map ZF

Map ZG

Map ZH

Map ZI

Map ZJ

Map ZK

Map ZL

Map ZM

Map ZN

Map ZO

Map ZP

Map ZQ

Map ZR

Map ZS

Map ZT

Map ZU

Map ZV

Map ZW

Map ZX

Map ZY

Map ZZ

Map ZA

Map ZB

Map ZC

Map ZD

Map ZE

Map ZF

Map ZG

Map ZH

Map ZI

Map ZJ

Map ZK

Map ZL

Map ZM

Map ZN

Map ZO

Map ZP

Map ZQ

Map ZR

Map ZS

Map ZT

Map ZU

Map ZV

Map ZW

Map ZX

Map ZY

Map ZZ

Map ZA

Map ZB

Map ZC

Map ZD

Map ZE

Map ZF

Map ZG

Map ZH

Map ZI

Map ZJ

Map ZK

Map ZL

Map ZM

Map ZN

Map ZO

Map ZP

Map ZQ

Map ZR

Map ZS

Map ZT

Map ZU

Map ZV

Map ZW

Map ZX

Map ZY

Map ZZ

Map ZA

Map ZB

Map ZC

Map ZD

Map ZE

Map ZF

Map ZG

Map ZH

Map ZI

Map ZJ

Map ZK

Map ZL

Map ZM

Map ZN

Map ZO

Map ZP

Map ZQ

Map ZR

Map ZS

Map ZT

Map ZU

Map ZV

Map ZW

Map ZX

Map ZY

Map ZZ

Map ZA

Map ZB

Map ZC

Map ZD

Map ZE

Map ZF

Map ZG

Map ZH

Map ZI

Map ZJ

Map ZK

Map ZL

Map ZM

Map ZN

Map ZO

Map ZP

Map ZQ

Map ZR

Map ZS

Map ZT

Map ZU

Map ZV

Map ZW

Map ZX

Map ZY

Map ZZ

Map ZA

Map ZB

Map ZC

Map ZD

Map ZE

Map ZF

Map ZG

Map ZH

Map ZI

Map ZJ

Map ZK

Map ZL

Map ZM

Map ZN

Map ZO

Map ZP

Map ZQ

Map ZR

Map ZS

Map ZT

Map ZU

Map ZV

Map ZW

Map ZX

Map ZY

Map ZZ

Map ZA

Map ZB

Map ZC

Map ZD

Map ZE

Map ZF

Map ZG

Map ZH

Map ZI

Map ZJ

Map ZK

Map ZL

Map ZM

Map ZN

Map ZO

Map ZP

Map ZQ

Map ZR

Map ZS

Map ZT

Map ZU

Map ZV

Map ZW

Map ZX

Map ZY

Map ZZ

Map ZA

Map ZB

Map ZC

Map ZD

Map ZE

Map ZF

Map ZG

Map ZH

Map ZI

Map ZJ

Map ZK

Map ZL

Map ZM

Map ZN

Map ZO

Map ZP

Map ZQ

Map ZR

Map ZS

Map ZT

Map ZU

Map ZV

Map ZW

Map ZX

Map ZY

Map ZZ

Map ZA

Map ZB

Map ZC

Map ZD

Map ZE

Map ZF

Map ZG

Map ZH

Map ZI

Map ZJ

Map ZK

Map ZL

Map ZM

Map ZN

Map ZO

Map ZP

Map ZQ

Map ZR

Map ZS

Map ZT

Map ZU

Map ZV

Map ZW

Map ZX

Map ZY

Map ZZ

Map ZA

Map ZB

Map ZC

Map ZD

Map ZE

Map ZF

Map ZG

Map ZH

Map ZI

Map ZJ

Map ZK

Map ZL

Map ZM

Map ZN

Map ZO

Map ZP

Map ZQ

Map ZR

Map ZS

Map ZT

Map ZU

Map ZV

Map ZW

Map ZX

Map ZY

Map ZZ

Map ZA

Map ZB

Map ZC

Map ZD

Map ZE

Map ZF

Map ZG

Map ZH

Map ZI

Map ZJ

Map ZK

Map ZL

Map ZM

Map ZN

Map ZO

Map ZP

Map ZQ

Map ZR

Map ZS

Map ZT

Map ZU

Map ZV

Map ZW

Map ZX

Map ZY

Map ZZ

Map ZA

Map ZB

Map ZC

Map ZD

Map ZE

Map ZF

Map ZG

Map ZH

Map ZI

Map ZJ

Map ZK

Map ZL

Map ZM

Map ZN

Map ZO

Map ZP

Map ZQ

Map ZR

Map ZS

Map ZT

Map ZU

Map ZV

Map ZW

Map ZX

Map ZY

Map ZZ

Map ZA

Map ZB

Map ZC

Map ZD

Map ZE

Map ZF

Map ZG

Map ZH

Map ZI

Map ZJ

Map ZK

Map ZL

Map ZM

Map ZN

Map ZO

Map ZP

Map ZQ

Map ZR

Map ZS

Map ZT

Map ZU

Map ZV

Map ZW

Map ZX

Map ZY

Map ZZ

Map ZA

Map ZB

Map ZC

Map ZD

Map ZE

Map ZF

Map ZG

Map ZH

Map ZI

Map ZJ

Map ZK

Map ZL

Map ZM

Map ZN

Map ZO

Map ZP

Map ZQ

Map ZR

Map ZS

Map ZT

Map ZU

Map ZV

Map ZW

Map ZX

Map ZY

Map ZZ

Map ZA

Map ZB

Map ZC

Map ZD

Map ZE

Map ZF

Map ZG

Map ZH

Map ZI

Map ZJ

Map ZK

Map ZL

Map ZM

Map ZN

Map ZO

Map ZP

Map ZQ

Map ZR

Map ZS

Map ZT

Map ZU

Map ZV

Map ZW

Map ZX

Map ZY

Map ZZ

Map ZA

Map ZB

Map ZC

Map ZD

Map ZE

Map ZF

Map ZG

Map ZH

Map ZI

Map ZJ

Map ZK

Map ZL

Map ZM

Map ZN

Map ZO

Map ZP

Map ZQ

Map ZR

Map ZS

Map ZT

Map ZU

Map ZV

Map ZW

Map ZX

Map ZY

Map ZZ

Map ZA

Map ZB

Map ZC

Map ZD

Map ZE

Map ZF

Map ZG

Map ZH

Map ZI

Map ZJ

Map ZK

Map ZL

Map ZM

Map ZN

Map ZO

Map ZP

Map ZQ

Map ZR

Map ZS

Map ZT

Map ZU

Map ZV

Map ZW

Map ZX

Map ZY

Map ZZ

Map ZA

Map ZB

Map ZC

Map ZD

Map ZE

Map ZF

Map ZG

Map ZH

Map ZI

Map ZJ

Map ZK

Map ZL

Map ZM

Map ZN

Map ZO

Map ZP

Map ZQ

Map ZR

Map ZS

Map ZT

Map ZU

Map ZV

Map ZW

Map ZX

Map ZY

Map ZZ

Map ZA

Map ZB

Map ZC

Map ZD

Map ZE

Map ZF

Map ZG

Map ZH

Map ZI

Map ZJ

Map ZK

Map ZL

Map ZM

Map ZN

Map ZO

Map ZP

Map ZQ

Map ZR

Map ZS

Map ZT

Map ZU

Map ZV

Map ZW

Map ZX

Map ZY

Map ZZ

Map ZA

Map ZB

Map ZC

Map ZD

Map ZE

Map ZF

Map ZG

Map ZH

Map ZI

Map ZJ

Map ZK

Map ZL

Map ZM

Map ZN

Map ZO

Map ZP

Map ZQ

Map ZR

Map ZS

Map ZT

Map ZU

Map ZV

Map ZW

Map ZX

Map ZY

Map ZZ

Map ZA

Map ZB

Map ZC

Map ZD

Map ZE

Map ZF

Map ZG

Map ZH

Map ZI

Map ZJ

Map ZK

Map ZL

Map ZM

Map ZN

Map ZO

Map ZP

Map ZQ

Map ZR

Map ZS

Map ZT

Map ZU

Map ZV

Map ZW

Map ZX

Map ZY

Map ZZ

Map ZA

Map ZB

Map ZC

Map ZD

Map ZE

Map ZF

Map ZG

Map ZH

Map ZI

Map ZJ

Map ZK

Map ZL

Map ZM

Map ZN

Map ZO

Map ZP

Map ZQ

Map ZR

Map ZS

Map ZT

Map ZU

Map ZV

Map ZW

Map ZX

Map ZY

Map ZZ

Map ZA

Map ZB

Map ZC

Map ZD

Map ZE

Map ZF

Map ZG

Map ZH

Map ZI

Map ZJ

Map ZK

Map ZL

Map ZM

Map ZN

Map ZO

Map ZP

Map ZQ

Map ZR

Map ZS

Map ZT

Map ZU

Map ZV

Map ZW

Map ZX

Map ZY

Map ZZ

Map ZA

Map ZB

Map ZC

Map ZD

Map ZE

Map ZF

Map ZG

Map ZH

Map ZI

Map ZJ

Map ZK

Map ZL

Map ZM

Map ZN

Map ZO

Map ZP

Map ZQ

Map ZR

Map ZS

Map ZT

Map ZU

Map ZV

Map ZW

Map ZX

Map ZY

Map ZZ

Map ZA

Map ZB

Map ZC

Map ZD

Map ZE

Map ZF

Map ZG

Map ZH

Map ZI

Map ZJ

Map ZK

Map ZL

Map ZM

Map ZN

Map ZO

Map ZP

Map ZQ

Map ZR

Map ZS

Map ZT

Map ZU

Map ZV

Map ZW

Map ZX

Map ZY

Map ZZ

Map ZA

Map ZB

Map ZC

Map ZD

Map ZE

Map ZF

Map ZG

Map ZH

Map ZI

Map ZJ

Map ZK

Map ZL

Map ZM

Map ZN

Map ZO

Map ZP

Map ZQ

Map ZR

Map ZS

Map ZT

Map ZU

Map ZV

Map ZW

Map ZX

Map ZY

Map ZZ

Map ZA

Map ZB

Map ZC

Map ZD

Map ZE

Map ZF

Map ZG

Map ZH

Map ZI

Map ZJ

Map ZK

Map ZL

Map ZM

Map ZN

Map ZO

Map ZP

Map ZQ

Map ZR

Map ZS

Map ZT

Map ZU

Map ZV

Map ZW

Map ZX

Map ZY

Map ZZ

Map ZA

Map ZB

Map ZC

Map ZD

Map ZE

Map ZF

Map ZG

Map ZH

Map ZI

Map ZJ

Map ZK

Map ZL

Map ZM

Map ZN

Map ZO

Map ZP

Map ZQ

Map ZR

Map ZS

Map ZT

Map ZU

Map ZV

Map ZW

Map ZX

Map ZY

Map ZZ

Map ZA

Map ZB

Map ZC

Map ZD

Map ZE

Map ZF

Map ZG

Map ZH

Map ZI

Map ZJ

Map ZK

Map ZL

Map ZM

Map ZN

Map ZO

Map ZP

Map ZQ

Map ZR

Map ZS

Map ZT

Map ZU

Map ZV

Map ZW

Map ZX

Map ZY

Map ZZ

Map ZA

Map ZB

Map ZC

Map ZD

Map ZE

Map ZF

Map ZG

Map ZH

Map ZI

Map ZJ

Map ZK

Map ZL

Map ZM

Map ZN

Map ZO

Map ZP

Map ZQ

Map ZR

Map ZS

Map ZT

Map ZU

Map ZV

Map ZW

Map ZX

Map ZY

Map ZZ

Map ZA

Map ZB

Map ZC

Map ZD

Map ZE

Map ZF

Map ZG

Map ZH

Map ZI

Map ZJ

Map ZK

Map ZL

Map ZM

Map ZN

Map ZO

Map ZP

Map ZQ

Map ZR

Map ZS

Map ZT

Map ZU

Map ZV

Map ZW

Map ZX

Map ZY

Map ZZ

Map ZA

Map ZB

Map ZC

Map ZD

Map ZE

Map ZF

Map ZG

Map ZH

Map ZI

Map ZJ

Map ZK

Map ZL

Map ZM

Map ZN

Map ZO

Map ZP

Map ZQ

Map ZR

Map ZS

Map ZT

Map ZU

Map ZV

Map ZW

Map ZX

Map ZY

Map ZZ

Map ZA

Map ZB

Map ZC

Map ZD

Map ZE

Map ZF

Map ZG

Map ZH

Map ZI

Map ZJ

Map ZK

Map ZL

Map ZM

Map ZN

Map ZO

Map ZP

Map ZQ

Map ZR

Map ZS

Map ZT

Map ZU

Map ZV

Map ZW

Map ZX

Map ZY

Map ZZ

Map ZA

Map ZB

Map ZC

Map ZD

Map ZE

Map ZF

Map ZG

Map ZH

Map ZI

Map ZJ

Map ZK

Map ZL

Map ZM

Map ZN

Map ZO

Map ZP

Map ZQ

Map ZR

Map ZS

Map ZT

Map ZU

Map ZV

Map ZW

Brazos County: Mapping Data



Traffic Stop
F1

10-8
F2

Out Of Service
F3

Transport
F4

Transport Complete
F5

FldCont
F6

Parking Violation
F7

Patrol

Dispatch

Query

Admin

VIEW1

Active Calls

Unit Status

MAP

OnView

AVLQ

Back

Next

Track

Layers

In

Out

Pan

Info

Full

Address

Places

Cross St

Route

XY

Layers

☒ [Units]
☒ [Incidents]
☒ PSB POLICE
☒ PSB FIRE
☒ POLICE STATIO
☒ FIRE STATIONS
☒ PROPERTIES
☒ HYDRANTS
☒ -Hydrant
☒ PRE PLANS
☒ REGISTERED S
☒ (DRUG FREE Z
☒ STREAMS
☒ LAKE PONDS
☒ SCHOOLS
☒ PARKS
☒ PARK EMERGE
☒ PARK TRAILS
☒ RAILROADS
☒ STREETS
☒ ROBERTSON S
☒ BURLESON ST
☒ GRIMES STREE
☒ LEON STREETS
☒ MADISON STRE
☒ WASHINGTON S
☒ ZIP CODES
☒ TAMU BLINN C
☒ JP DISTRICTS
☒ SCHOOL (PROP
☒ CITY LIMITS
☒ -BlastPermit
☒ -BurnPermit
☒ -CommonPlace
☒ CITY COUNTY L
☒ FLOODPLAIN
☒ BRYAN AERIAL

HEARNE

160910100 (FU)

191L*

KURTEN

WIXON VALLEY

155

140

160

148

BRAZOS COUNTY

160910097 (FU)

COLLEGE STATION

GRIMES COUNTY

ANDERSON

161 910087 (68)

SNOOK

GROUP

Send

Run Plate

Full Screen

CAD ACKNOWLEDGED MESSAGE

Available

Stacked: 0

Messages: 0

My Details - 139S

CALL

Show my Unit

Show My Call

Route to My Call

Get Directions To Call

Info On Call Location

Hide Units and Calls

Copy to Whiteboard

Brazos County: CAD Integration



Tiburon M

Location Information

Name: ROBERTS, JABRODRICK SHCONE

Address: 1214 W 18TH ST

Phone: 9794921957

Coordinate: 96.362958, 30.695262

City: BR

Attributes

Field	Value
ZIP	77803
RSO_EMAIL	SCREENNAME
OCCUPATION	NONE
NAMEOFEMPL	UNEMPLOYED
EMPLOYERCI	
EMPLOYERST	
EMPLOYERZI	
EMPLOYERPH	
EDU_INFO	
CAMPUSCODE	
VEHICLELIC	
VIN	
VEHICLEVEA	
VEHICLEMAK	
VEHICLEMOD	
VEHICLESTY	
VEHICLECOL	
OFFENSE	INDECENCY W/CHILD SEXUAL CO..
VICTIMSEX	F/M
UPDATEDATE	10/26/2012
REC_UPDATE	N
RELATIONSH	RELATIVE
WEAPONUSED	0
WEAPONTYPE	0
COURTCAUSE	0013602004
DISPOSITIO	11/15/2004 12:00:00 AM
DISCHARGED	5/15/2009 12:00:00 AM
AMOUNTOFCC	
AMOUNTOFPR	4V6MO
COUNTYWHER	NACOGDOCHES
OUTOFSTATE	0
PROBATIONP	
COMMENTS	
AV_LINK	https://records.brazos.state.tx.us/24...
X	0
Y	0
AttributesID	201

Back

Close

Dispatch

Query

Admin

Unit Status

MAP

OnView

AVLQ

Pan

Info

Full

Address

Places

Cross St

Route

XY

STILL CREEK TRIBUTARY A

STILL CREEK TRIBUTARY A

STILL ST

MOON ST

FAIRVIEW ST

W 18TH ST

W 17TH ST

W 16TH ST

W 15TH ST

W 14TH ST

W 13TH ST

W 12TH ST

W 11TH ST

W 10TH ST

W 9TH ST

W 8TH ST

W 7TH ST

W 6TH ST

W 5TH ST

W 4TH ST

W 3TH ST

W 2TH ST

W 1TH ST

NEW TESTAMENT PENTACOSTAL CHURCH

CAMPBELL, LONDIE TYPRINE

ROBERTS, JABRODRICK SHCONE

SANFORD, FRANK HENRY

SEAFOOD HOUSE

CLUB TIPS (OLD)

BRAZOS BODY AUTO SALON

TURNERS BODY SHOP

CHURCH OF THE LIVING GOD(1)

HELLS BROTHERS

SUPER POLLO

HALLS CHURCH OF GOD

ROBERTS TIRE SHOP

MINO'S TIRE SHOP

COLUMBIA AV

HURON ST

SAN JACINTO LN

HALL ST

Send

Run Plate

CAD ACKNOWLEDGED MESSAGE

Available

Stacked: 0

Messages: 0

My Details • 139S

Texas Department of Public Safety

Courtesy ~ Service ~ Protection

TXDPS CBS | TXDPS SEX OFFENDER REGISTRY

Sign in | Support | Print

(Choose)

Home | Search

ROBERTS, JABRODRICK SHCONE

SID

07396216

RISK LEVEL

MODERATE

ENDING REGISTRATION DATE (PROJECTED)

05/15/2020

VERIFICATION REQUIREMENT

ANNUALLY

SEX

MALE

RACE

BLACK

ETHNICITY

NON-HISPANIC

HEIGHT

6'4"

WEIGHT

250 LBS

HAIR COLOR

BLACK

EYE COLOR

BROWN

SHOE SIZE

09.5

SHOE WIDTH

D

NAME(S)

ROBERTS, JABRODRICK SHCONE (PRIMARY)

BIRTH DATE(S)

05/15/1991 (PRIMARY)

Notices

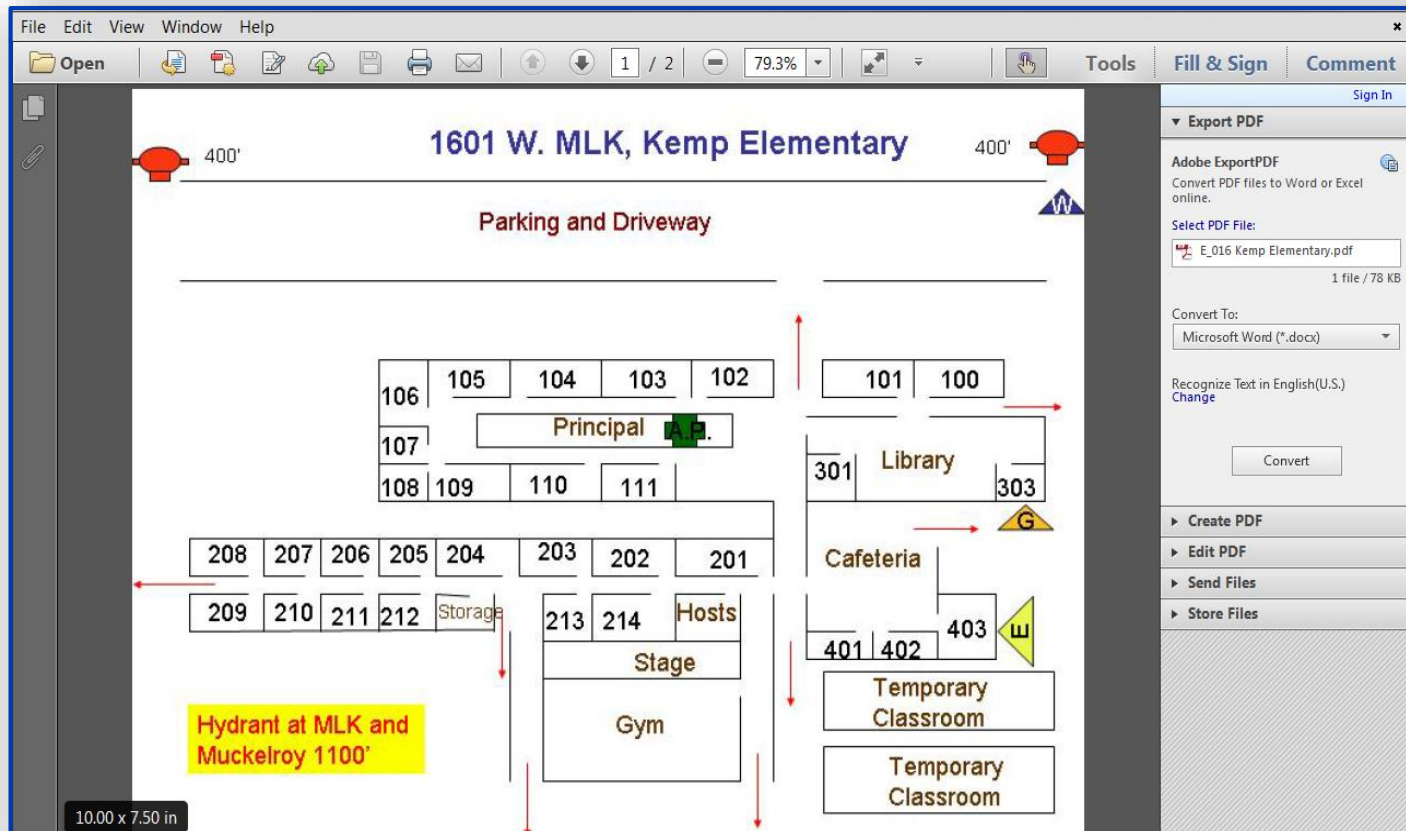
DPS Cannot guarantee the records you obtain through this site relate to the person about whom you are seeking information. Searches based on names, dates of birth and other alphanumeric identifiers are not always accurate. The only way to positively link someone to a criminal record is through fingerprint verification.

The registry contains information as reported by the law enforcement agency that served as the offender's last Texas registration authority. Registrants who leave the state will have their last reported state/country of intended residence reflected in the address portion of their record. Registration information will remain on the web site until the duty to register has expired or other relief allowed by statute is granted. (Art. 62.101 and 62.251 Tx CCP)

Photo Reported

09/09/2015

Brazos County: Building Pre-Plan



Brazos County: Mobile Video



Live

Archive

Upload

Export

Ready Busy Upload

HD

?

Camera

Bookmark

Classify

In Car

Off

IR

Off

Mode

Auto Zoom

Audio


Front Cam

Front

Back-Seat

03/31/2016 09:47:02


D



640x360 - 3Mbps

03/31/2016 09:47:02

D



640x360 - 1Mbps

3/31/2016 9:47:02 AM

Time Remaining
130 hours 57 minutes

GPS

SPD 000 MPH

LAT 30.676575N

LON 96.393111W

Radar

OWN --- MPH

TGT --- MPH

TGT OFF MPH

Trigger

1: Mic Talk

2: Mic Dock

3: Mic Mute

4: Lights

16: GPS

REC

STOP

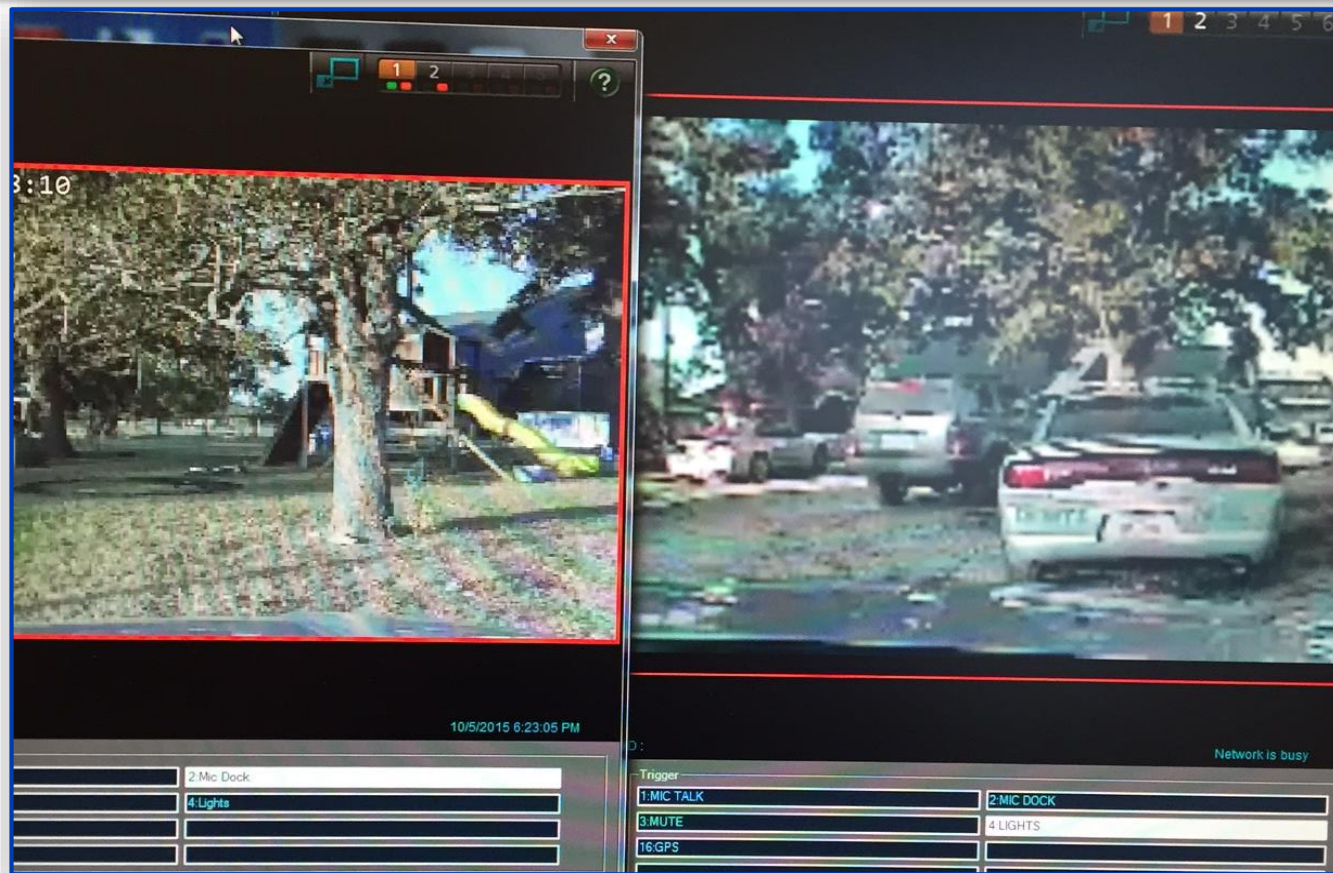
Info

Officers

Status

Snapshot

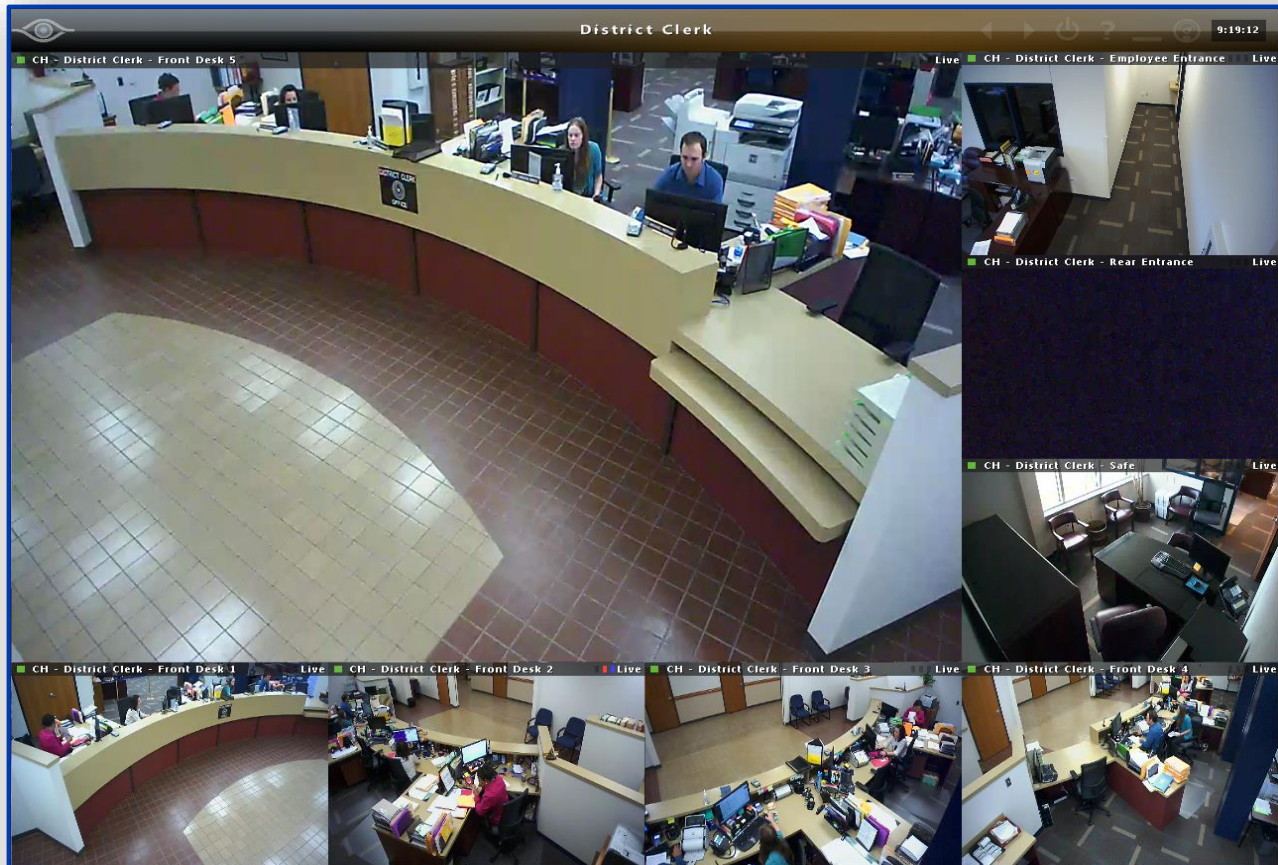
Brazos County: Armed Stand-off



Brazos County: Tornado & Flooding



Brazos County: Security Cameras





State and Local Implementation Grant Program (SLIGP) Update

FirstNet Single Point of Contact (SPOC) Meeting

November 16-17, 2016

Mike Dame
SLIGP Director
Office of Public Safety
Communications (OPSC)
NTIA

Yuki Miyamoto
SLIGP Federal Program Officer (FPO)
OPSC
NTIA

Natalie Romanoff
SLIGP FPO
OPSC
NTIA

Overview

CURRENT STATE

40%

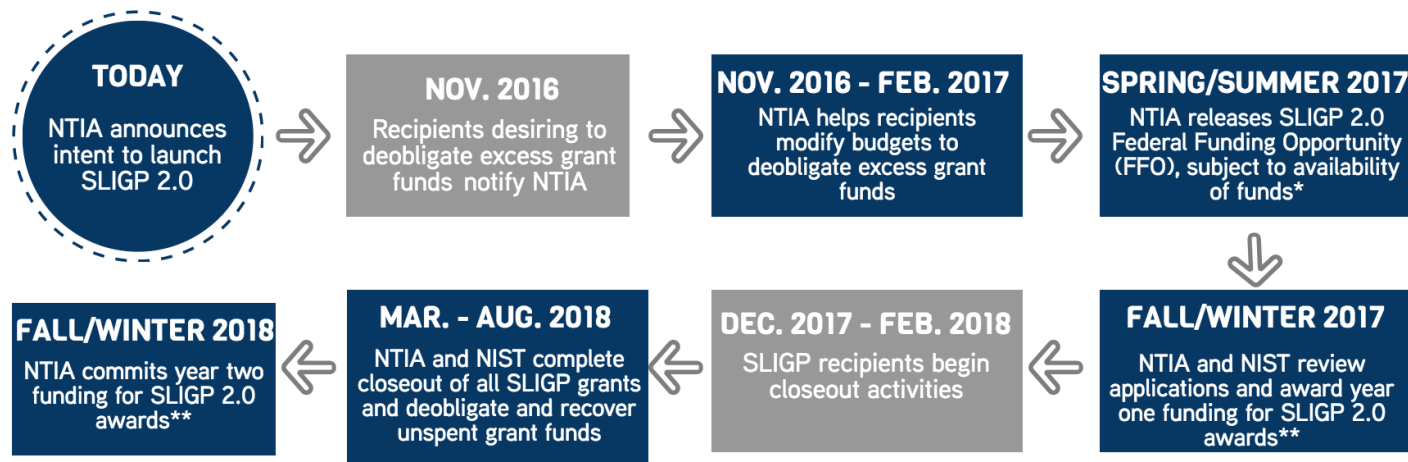
of the total
awarded amount
could remain
unspent.

State and Local Implementation Grant Program (SLIGP) recipients have not expended funds as quickly as expected. NTIA expects that approximately \$45-47 million will remain unspent at the end of the period of performance in February 2018.

NTIA intends to **award SLIGP 2.0 grants** that will **leverage SLIGP unspent balances** to **support activities** in states where FirstNet is deploying the Radio Access Network (RAN), subject to the availability of funding.

Approach: Leveraging Unspent Balances

Timeline is notional and subject to change



*Pending NTIA leadership approval

**Subject to availability of funds

■ NTIA and/or NIST action

■ Recipient action

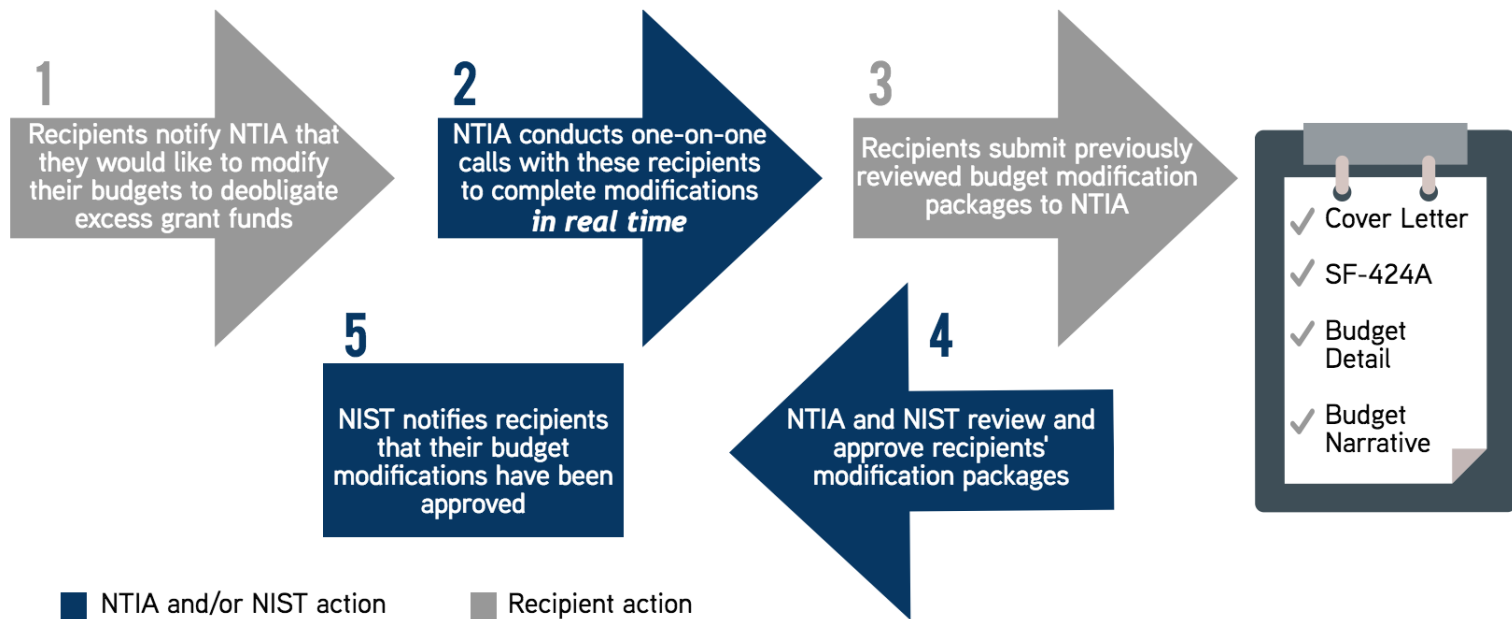
ORIGINAL SLIGP

All funds (Phase 1 and Phase 2) obligated simultaneously for the entire period of performance

SLIGP 2.0

Multi-year funding (Year 1 obligated Fall/Winter 2017; Year 2 obligated subject to availability of funding in Fall/Winter 2018)

Budget Modification Process



Questions

NTIA will have a table in the “Conversation Room” and will be available to answer questions in-person at that time.

Frequently Asked Questions (FAQs)

- Who will be eligible for a SLIGP 2.0 award?
- If I deobligate projected excess funds, will I get those funds back in a SLIGP 2.0 award?
- If I deobligate funds and apply, will I be guaranteed a SLIGP 2.0 award?
- What happens if NTIA does not recover enough money to make SLIGP 2.0 awards?
- How will the presidential election affect SLIGP 2.0 awards?
- Why isn't NTIA just extending current SLIGP grants?
- What will the allowable costs be for SLIGP 2.0 grants?