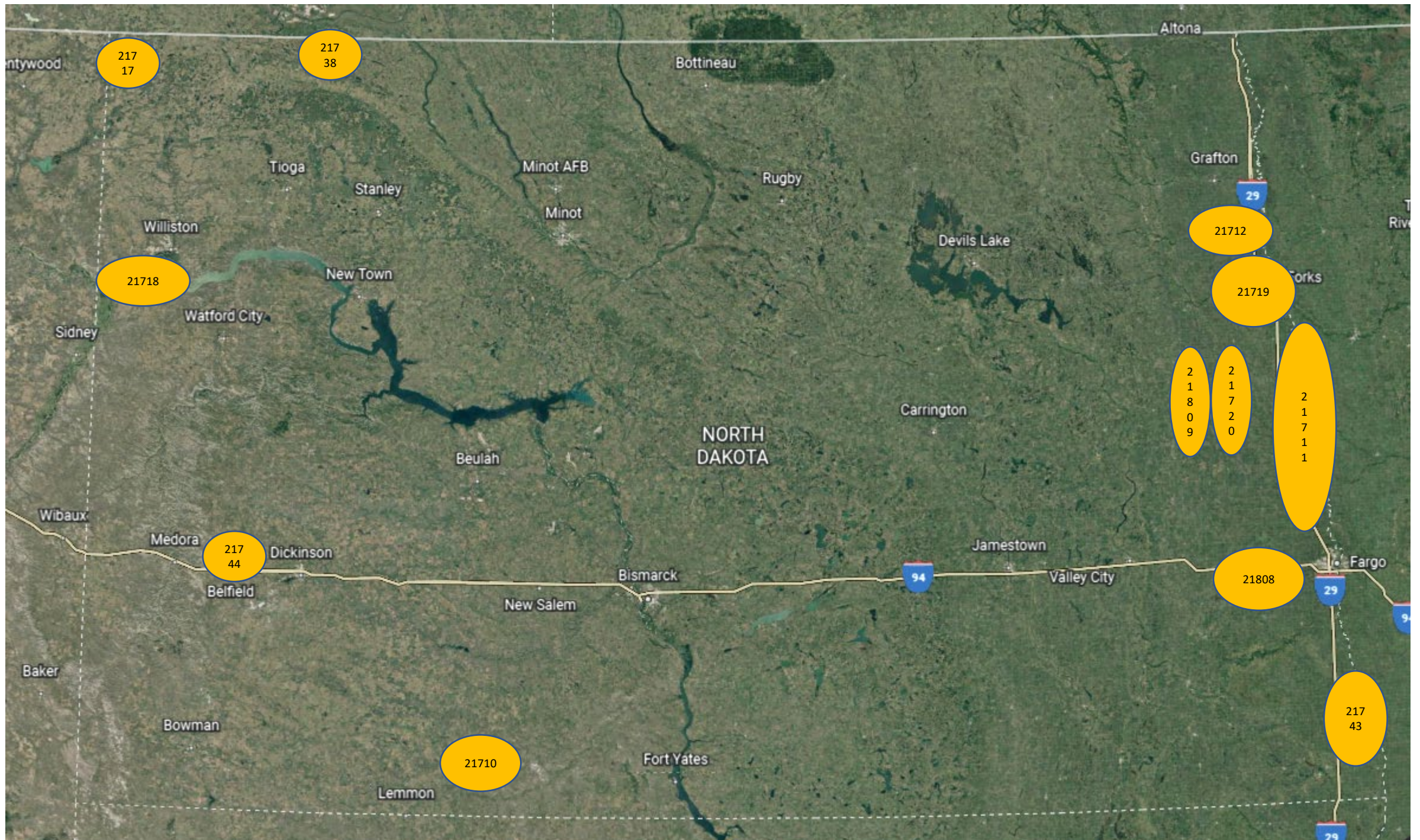


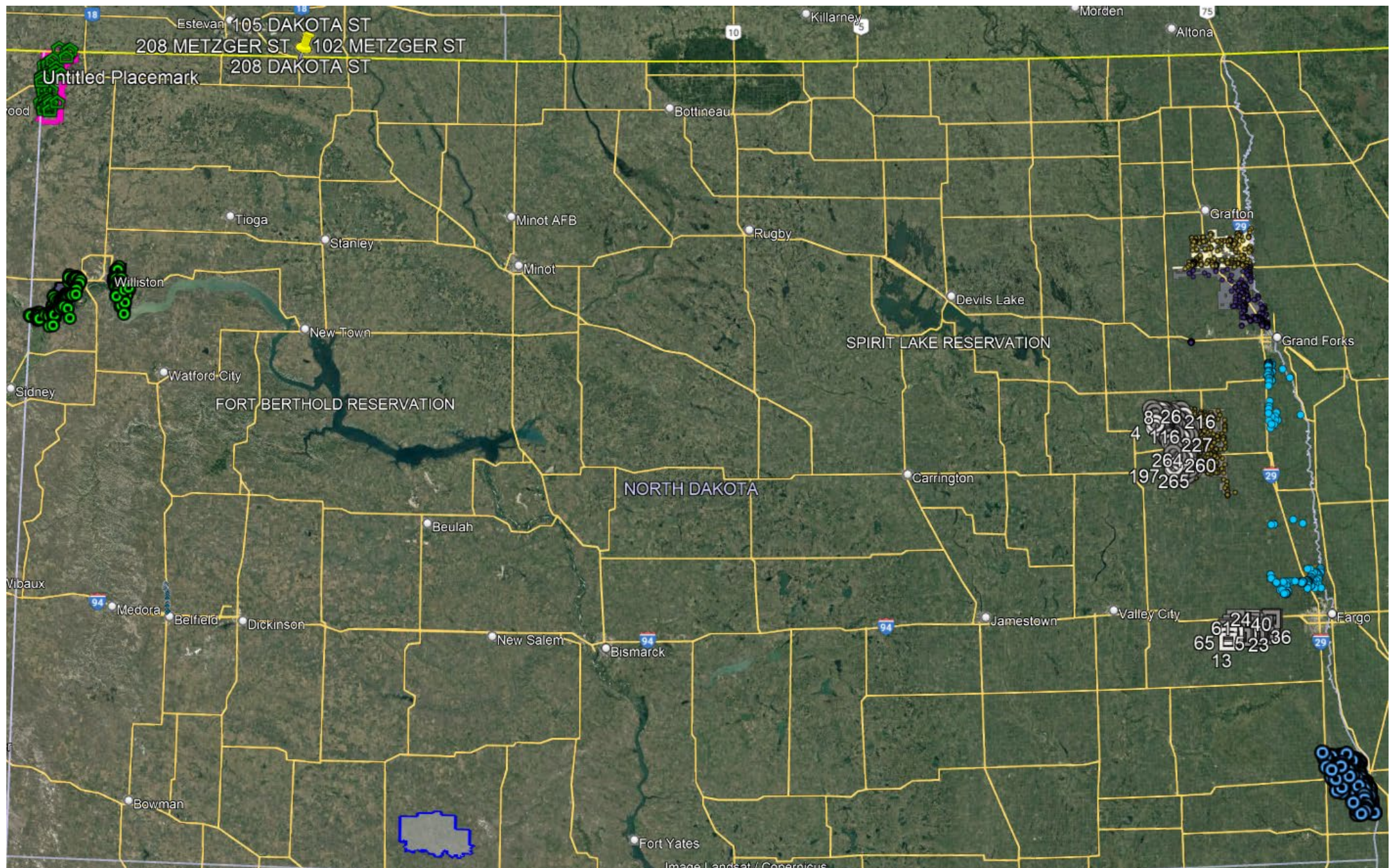
Broadband ND Capital Projects Fund

Proposed Project Areas Summary

For Challenge Process Review

12/15/2022





21744

LOCATION

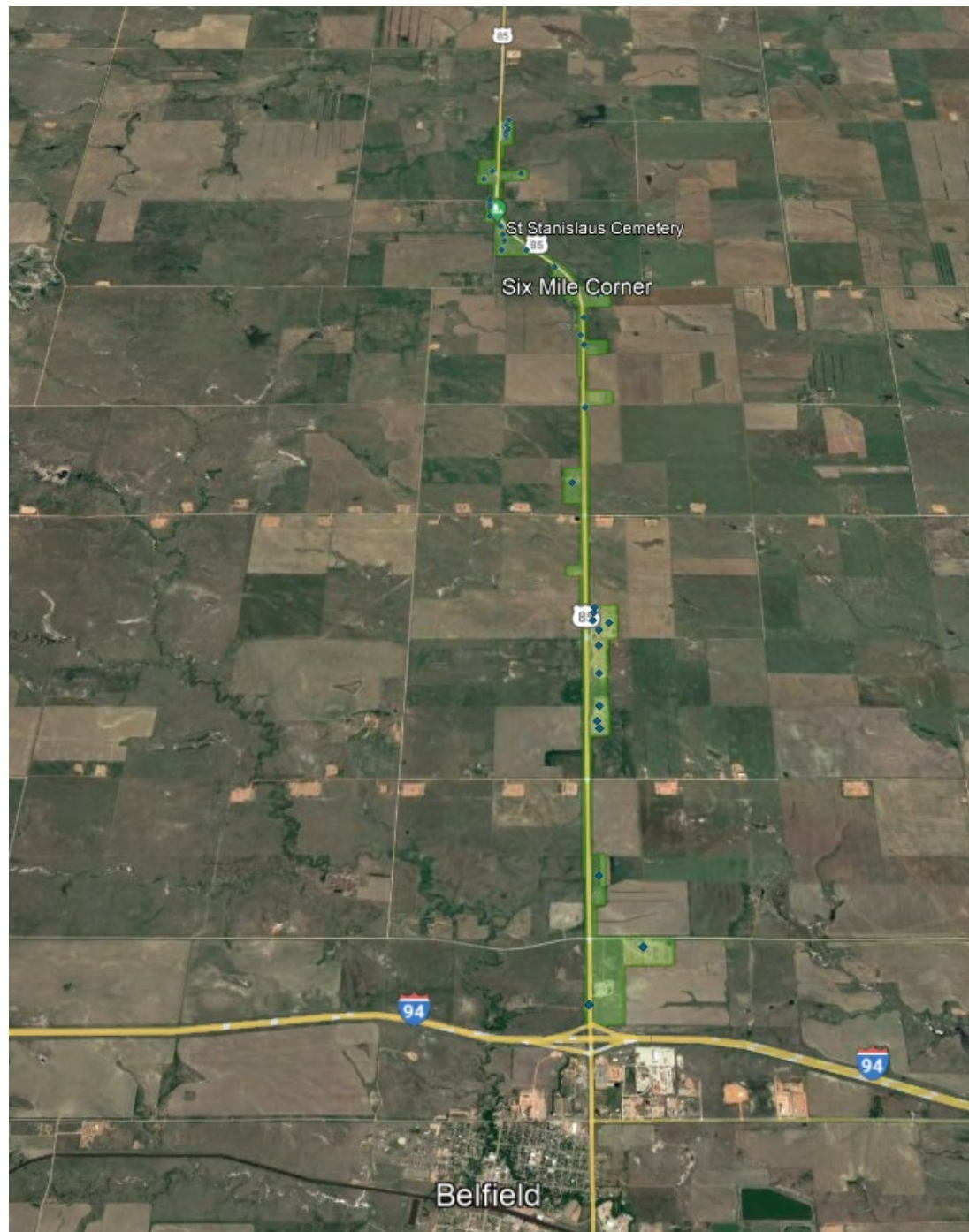
Belfield – Hwy 85

CUSTOMERS

0 Critical Comm. Facilities

39 total addresses

- 9 res unserved
- 8 res underserved
- 6 bus unserved
- 16 bus underserved



21743

LOCATION

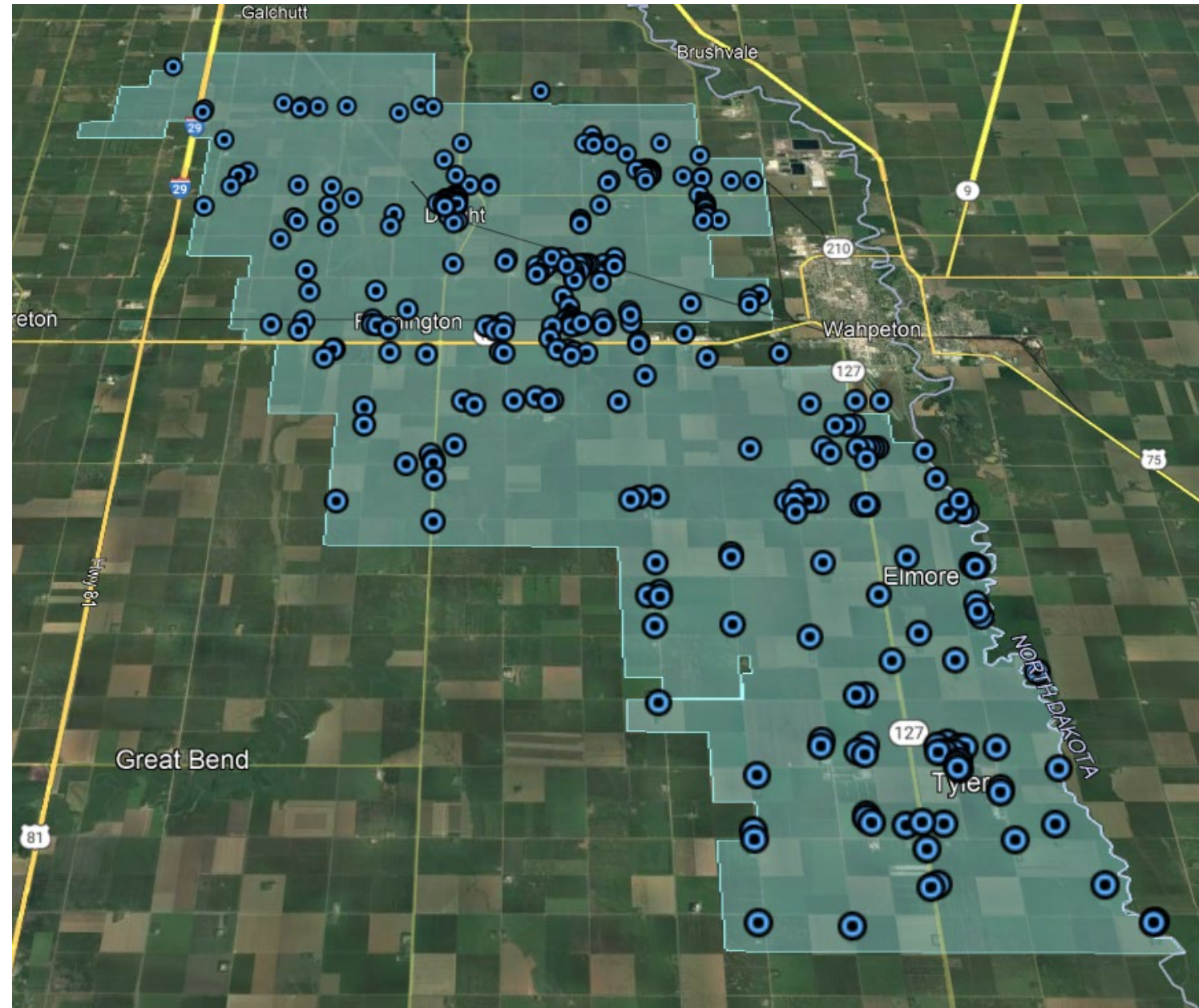
Rural Wahpeton

CUSTOMERS

10 Critical Comm. Facilities

324 total addresses

- 0 res unserved
- 293 res underserved
- 0 bus unserved
- 31 bus underserved



21711

LOCATION

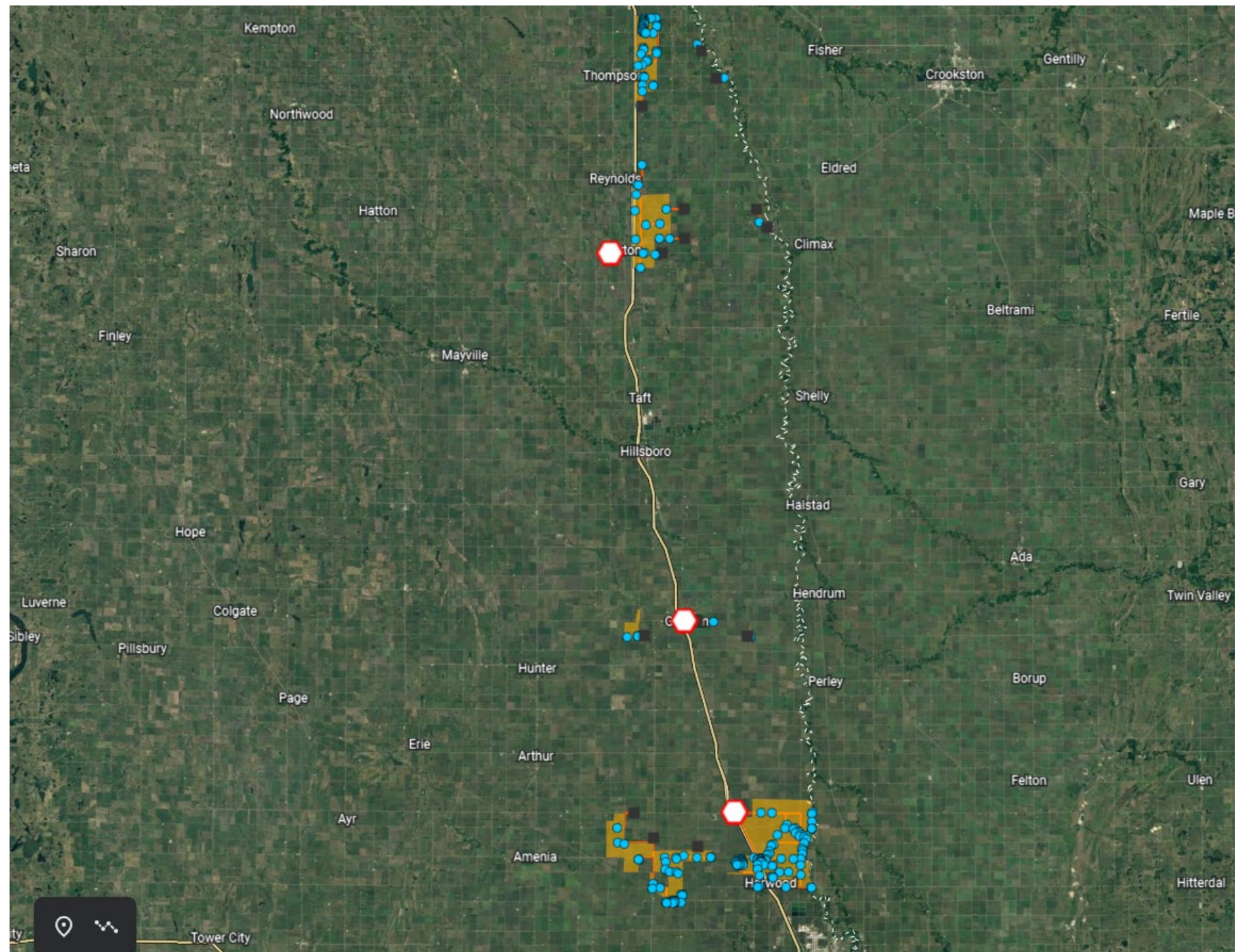
Cass, Grand Forks
& Traill County

CUSTOMERS

0 Critical Comm. Facilities

221 total addresses

- 0 res unserved
- 212 res underserved
- 0 bus unserved
- 9 bus underserved



21717

LOCATION

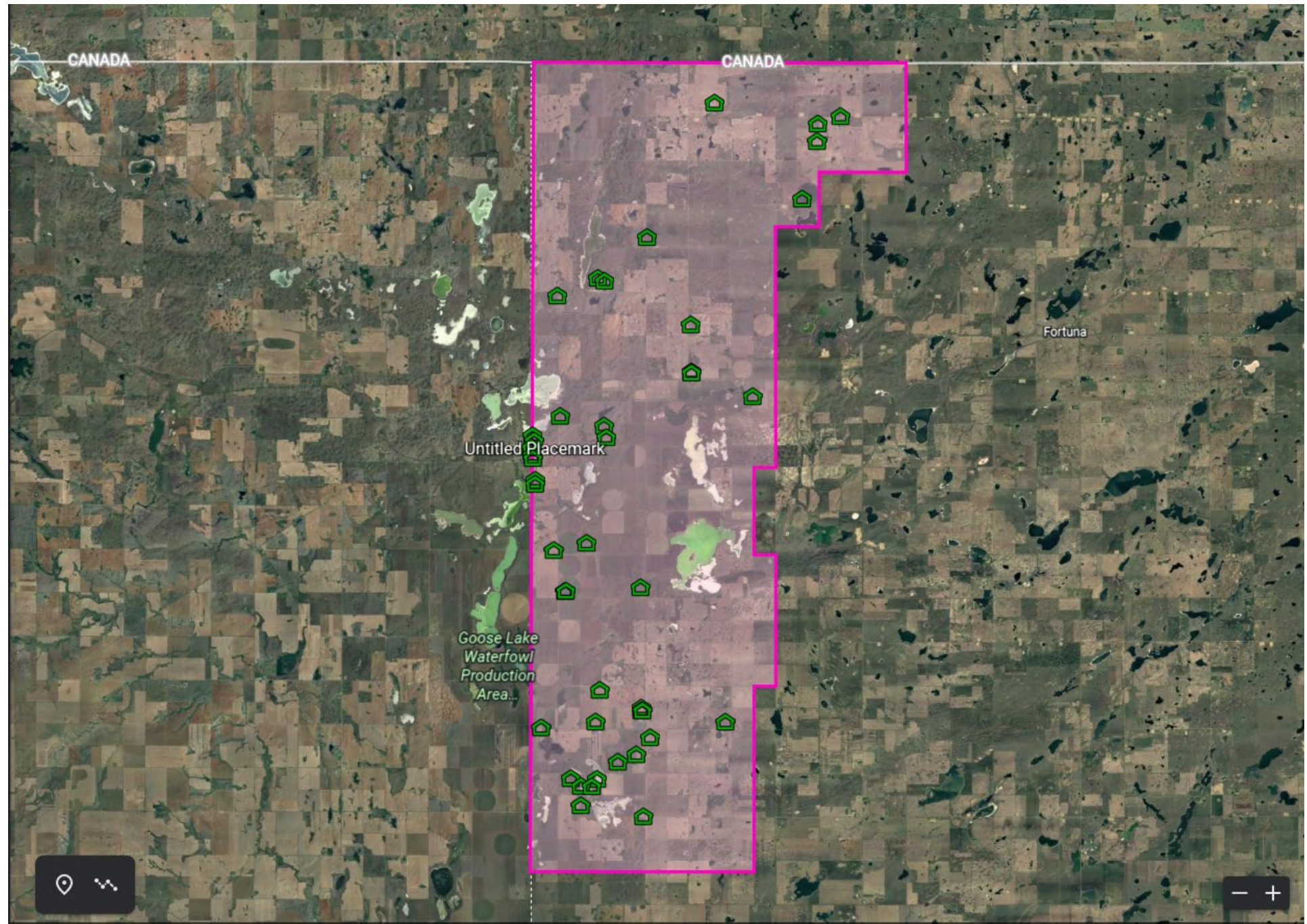
East Westby-Divide County

CUSTOMERS

0 Critical Comm. Facilities

44 total addresses

- 23 res unserved
- 21 res underserved
- 0 bus unserved
- 0 bus underserved



21718

LOCATION

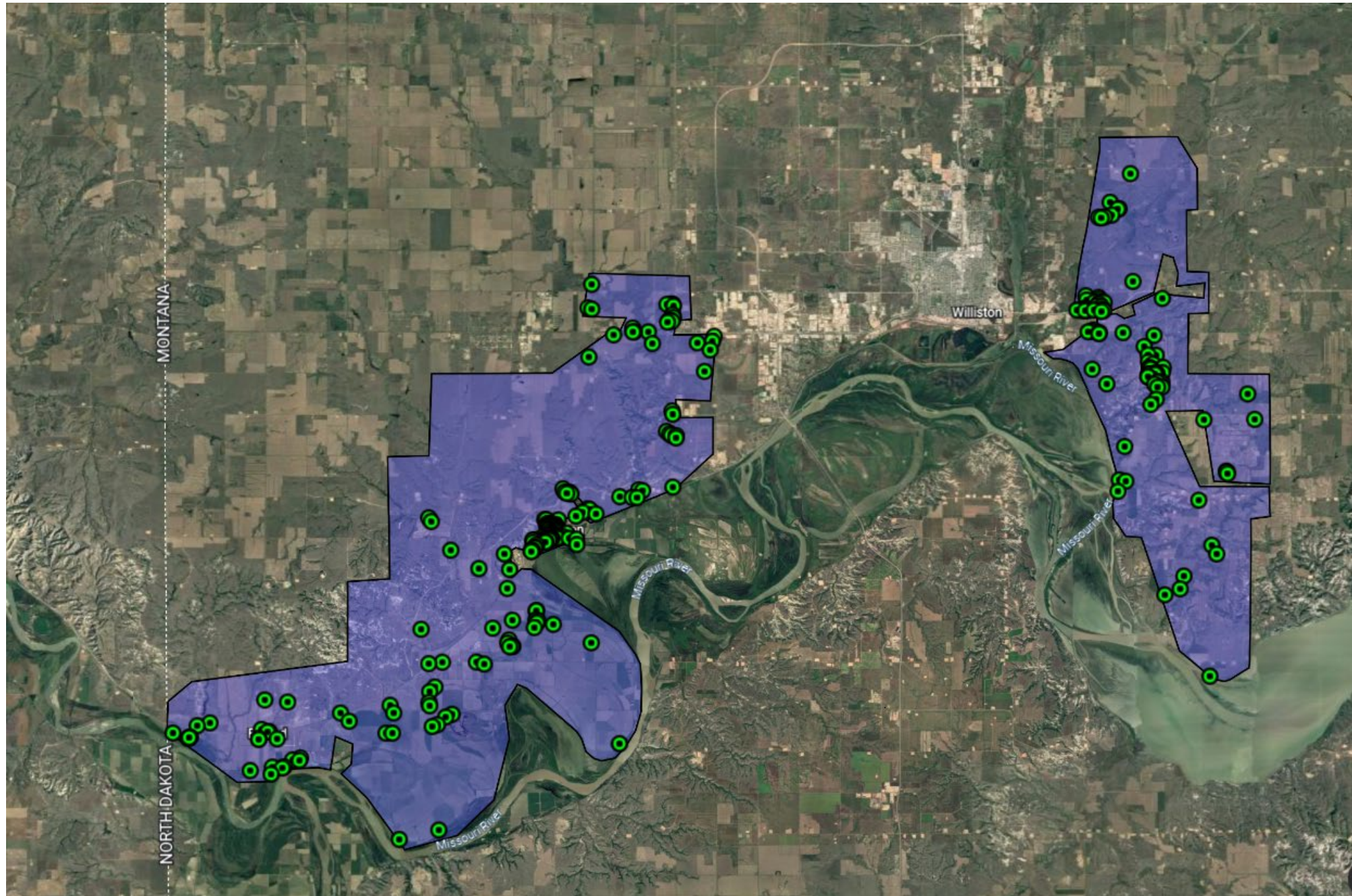
Williston-Williams County

CUSTOMERS

3 Critical Comm. Facilities

291 total addresses

- 182 res unserved
- 37 res underserved
- 0 bus unserved
- 72 bus underserved



21738

LOCATION

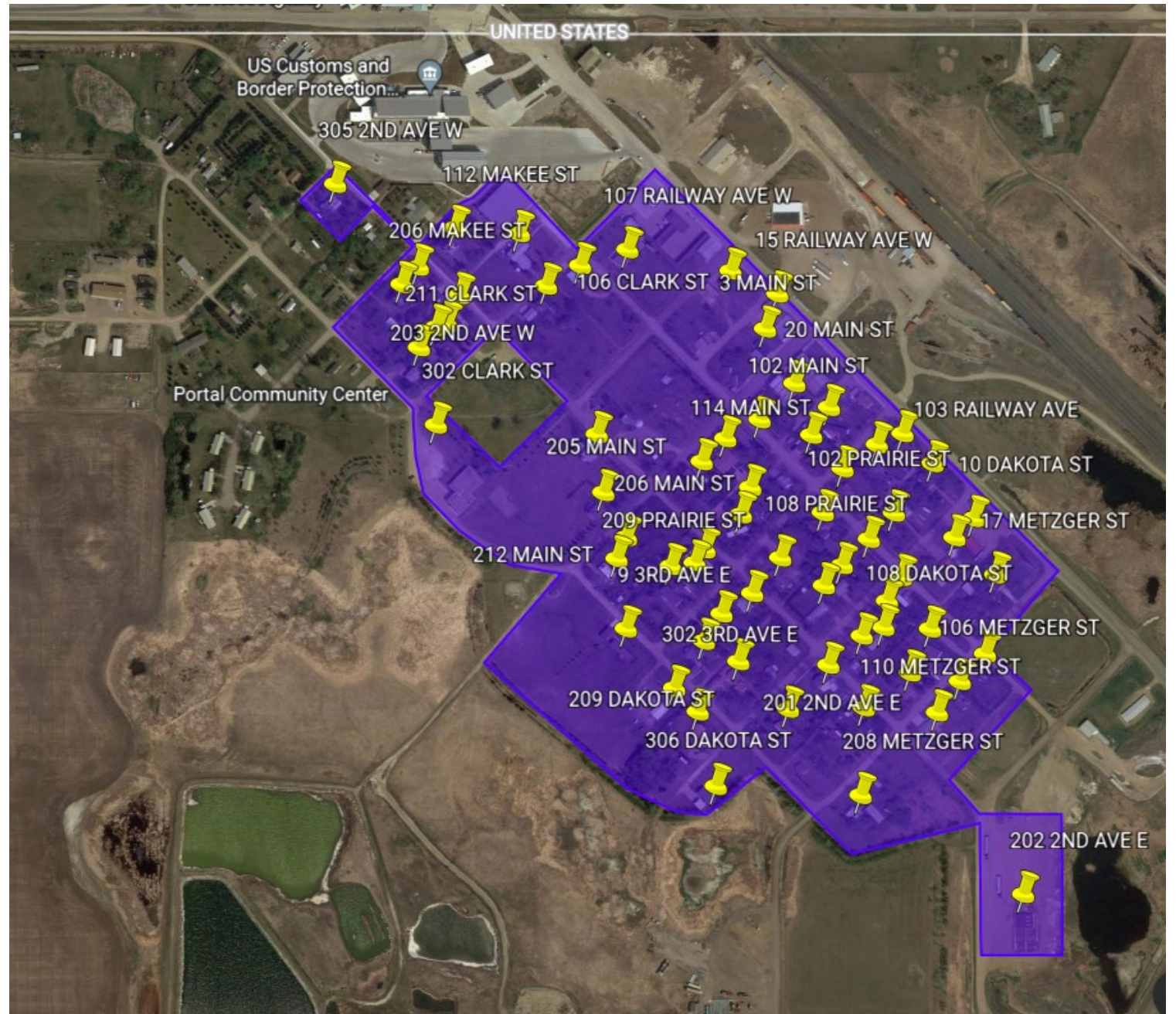
Portal - Burke County

CUSTOMERS

3 Critical Comm. Facilities

66 total addresses

- 0 res unserved
- 54 res underserved
- 0 bus unserved
- 12 bus underserved



21712

LOCATION

Walsh County

CUSTOMERS

0 Critical Comm. Facilities

305 total addresses

- 186 res unserved
- 96 res underserved
- 15 bus unserved
- 8 bus underserved



21719

LOCATION

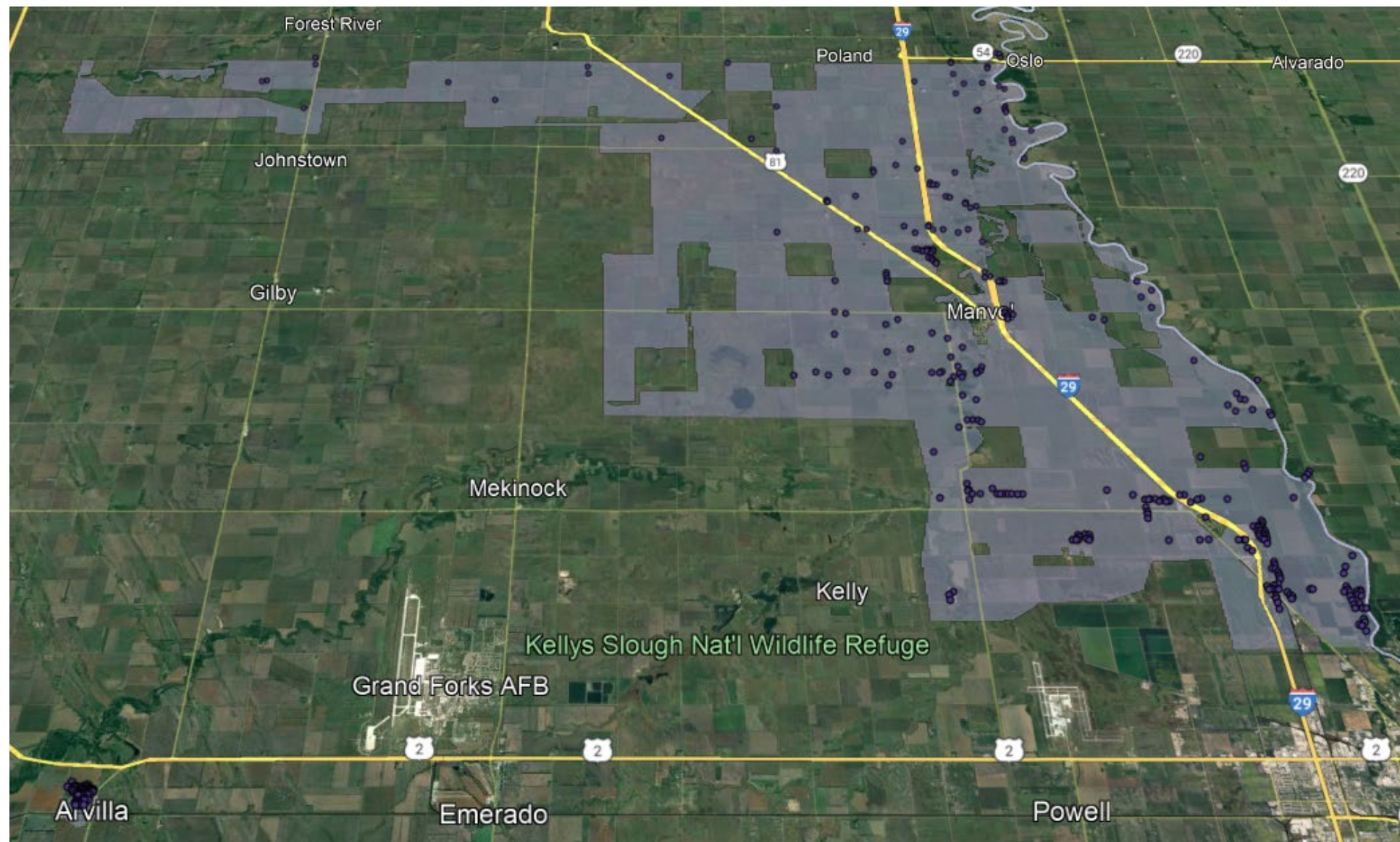
Grand Forks County

CUSTOMERS

0 Critical Comm. Facilities

356 total addresses

- 244 res unserved
- 65 res underserved
- 37 bus unserved
- 10 bus underserved



21720

LOCATION

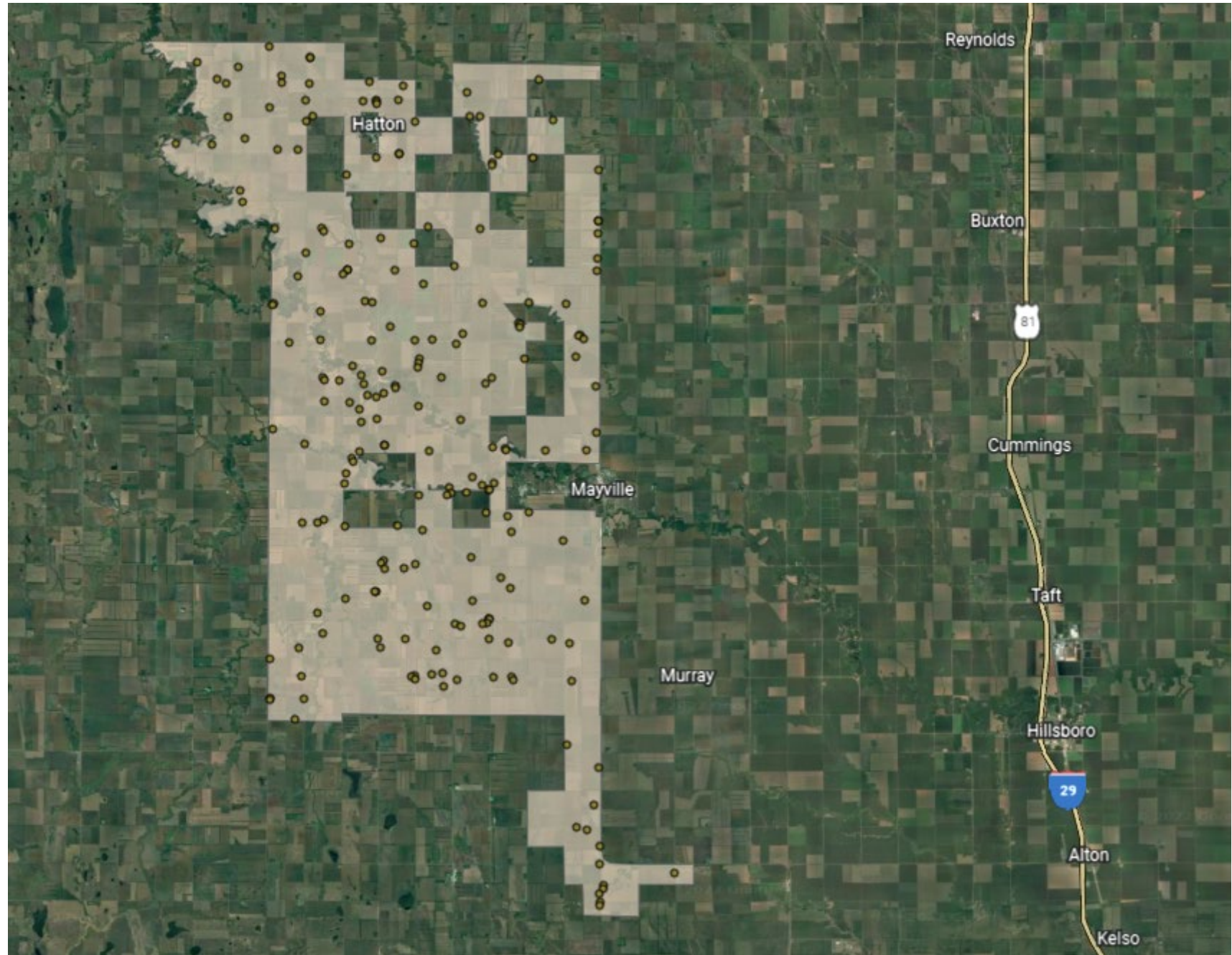
Trail/ Steele Counties

CUSTOMERS

0 Critical Comm. Facilities

203 total addresses

- 114 res unserved
- 74 res underserved
- 9 bus unserved
- 6 bus underserved



21710

LOCATION

Grant County

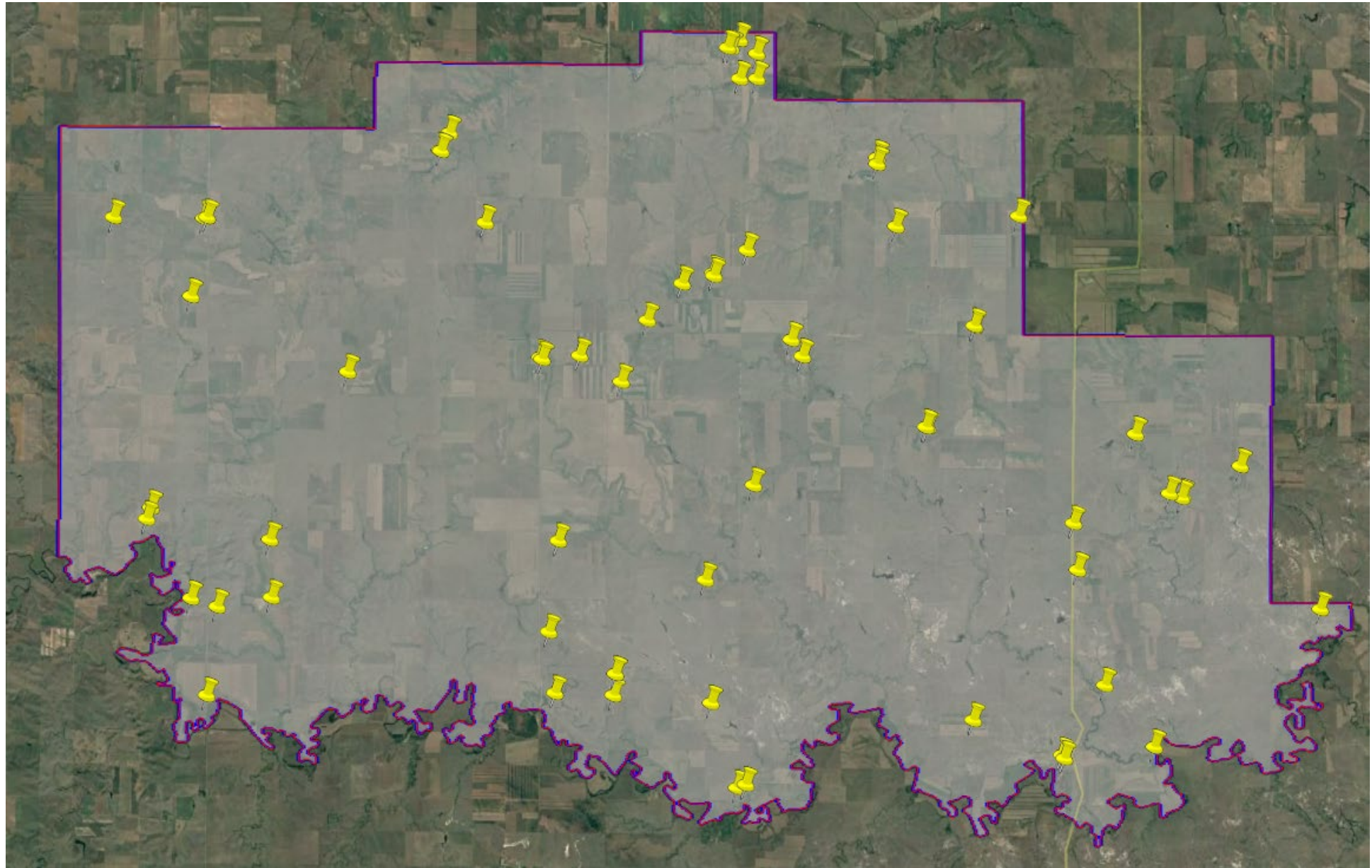
CUSTOMERS

0 Critical Comm. Facilities

130 total addresses*

- 65 res unserved
- 0 res underserved
- 65 bus unserved
- 0 bus underserved

*Note: these are rural farms & ranches and are same location. Pop Density .39 per sq mile



21809

LOCATION

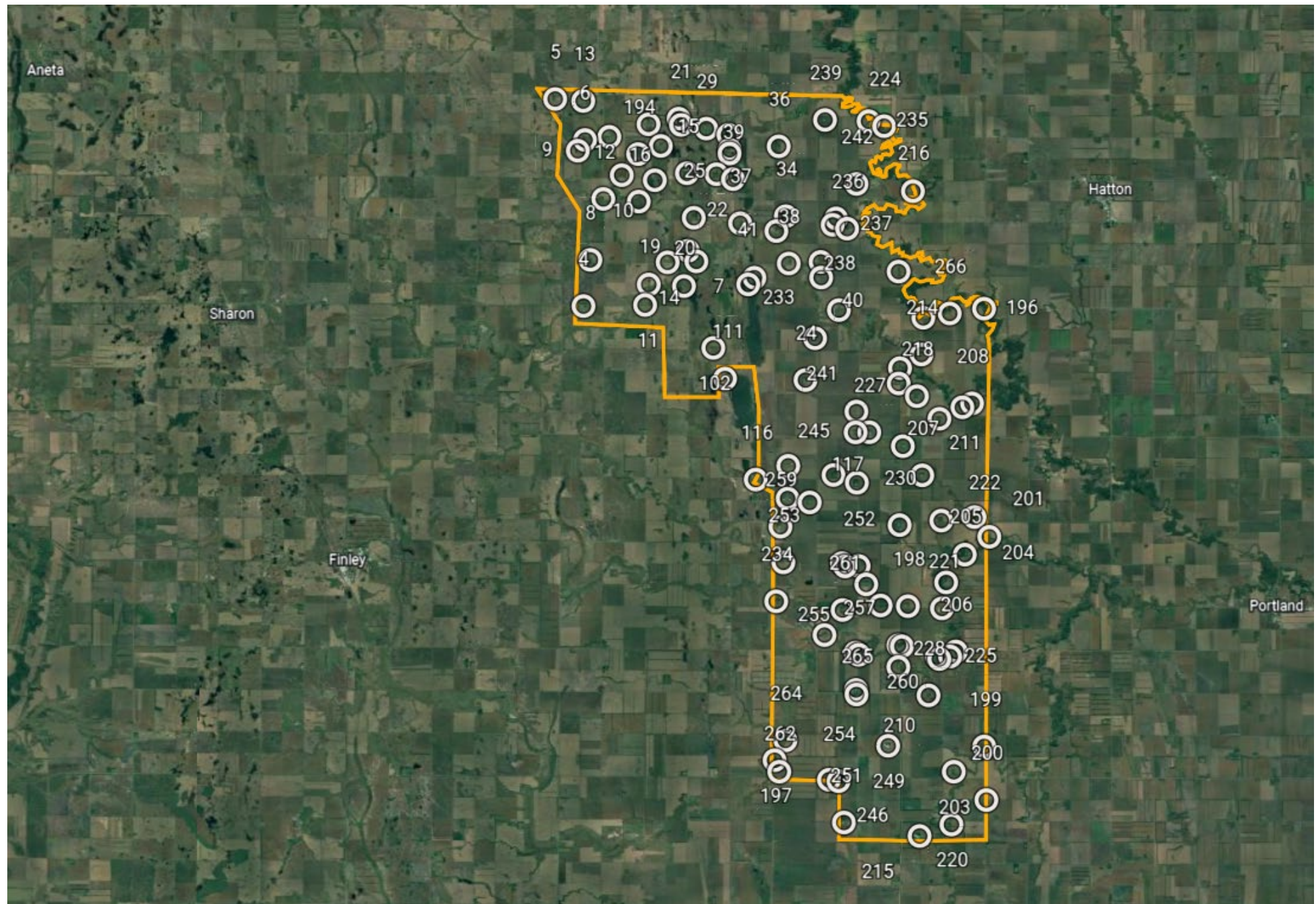
Steele County

CUSTOMERS

0 Critical Comm. Facilities

120 total addresses

- 0 res unserved
- 120 res underserved
- 0 bus unserved
- 0 bus underserved



21808

LOCATION

Cass County

CUSTOMERS

0 Critical Comm. Facilities

51 total addresses

- 0 res unserved
- 51 res underserved
- 0 bus unserved
- 0 bus underserved

